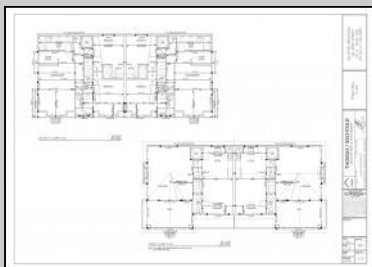
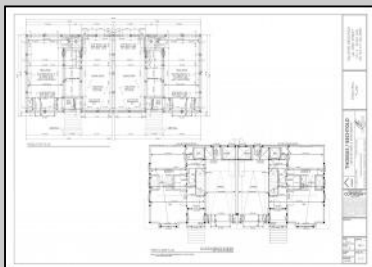
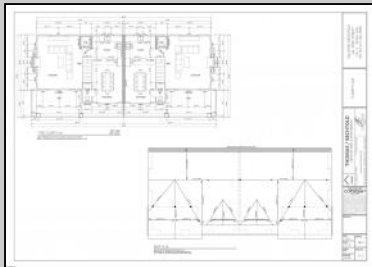
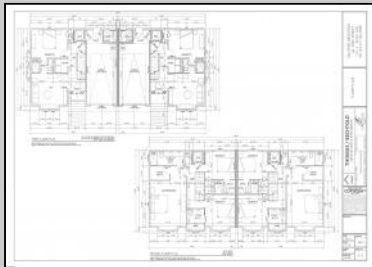




4301 Central Ave
Sea Isle City, NJ 08243

Asking \$2,199,000.00



WORKING DRAWINGS
SEPTEMBER 11, 2024

BUILDING DATA		USE (SCHEDULE)	
300 INTERNATIONAL RESIDENTIAL CARE EDITION		DATE	FILE#
100 (GROUP #)		9-13-80	1-1
CONTRACT NO. 154		9-13-80	6-1
TOTAL SQ. FT. 144000		9-13-80	7-1
TOTAL FLOOR AREA 100000		9-13-80	A-0
BUILDING CODE 1007 PERMITS (SAP)		9-13-80	1-1
FLOOR CONC. 4		9-13-80	2-1
FLOOR ELEVATION 40		9-13-80	3-1
		9-13-80	4-1
		9-13-80	5-1
		9-13-80	6-1
		9-13-80	7-1
		9-13-80	8-1
		9-13-80	9-1
		9-13-80	10-1
		9-13-80	11-1
		9-13-80	12-1
		9-13-80	13-1
		9-13-80	14-1
		9-13-80	15-1
		9-13-80	16-1
		9-13-80	17-1
		9-13-80	18-1
		9-13-80	19-1
		9-13-80	20-1
		9-13-80	21-1
		9-13-80	22-1
		9-13-80	23-1
		9-13-80	24-1
		9-13-80	25-1
		9-13-80	26-1
		9-13-80	27-1
		9-13-80	28-1
		9-13-80	29-1
		9-13-80	30-1
		9-13-80	31-1
		9-13-80	32-1
		9-13-80	33-1
		9-13-80	34-1
		9-13-80	35-1
		9-13-80	36-1
		9-13-80	37-1
		9-13-80	38-1
		9-13-80	39-1
		9-13-80	40-1
		9-13-80	41-1
		9-13-80	42-1
		9-13-80	43-1
		9-13-80	44-1
		9-13-80	45-1
		9-13-80	46-1
		9-13-80	47-1
		9-13-80	48-1
		9-13-80	49-1
		9-13-80	50-1
		9-13-80	51-1
		9-13-80	52-1
		9-13-80	53-1
		9-13-80	54-1
		9-13-80	55-1
		9-13-80	56-1
		9-13-80	57-1
		9-13-80	58-1
		9-13-80	59-1
		9-13-80	60-1
		9-13-80	61-1
		9-13-80	62-1
		9-13-80	63-1
		9-13-80	64-1
		9-13-80	65-1
		9-13-80	66-1
		9-13-80	67-1
		9-13-80	68-1
		9-13-80	69-1
		9-13-80	70-1
		9-13-80	71-1
		9-13-80	72-1
		9-13-80	73-1
		9-13-80	74-1
		9-13-80	75-1
		9-13-80	76-1
		9-13-80	77-1
		9-13-80	78-1
		9-13-80	79-1
		9-13-80	80-1
		9-13-80	81-1
		9-13-80	82-1
		9-13-80	83-1
		9-13-80	84-1
		9-13-80	85-1
		9-13-80	86-1
		9-13-80	87-1
		9-13-80	88-1
		9-13-80	89-1
		9-13-80	90-1
		9-13-80	91-1
		9-13-80	92-1
		9-13-80	93-1
		9-13-80	94-1
		9-13-80	9



COMMENTS

Get in for Summer 2025! Welcome to this fantastic new construction on 43rd street at the corner of 43rd and Central (North Unit). The interior of this home has it all! This house has a unique kitchen layout, with open shelving, and a wet bar. Super spacious, 5 bedrooms 4 ½ bathrooms, high ceilings, Smart toilet in the master bath, LVT throughout the house, an EV hookup in the garage - this beach home has everything you need to enjoy summers at the Shore. The exterior is wrapped in spectacular Hardie Board siding. Park your car and don't move it! Walk to the beach, promenade, churches, nightlife, restaurants and Fish Alley - all within minutes of your front door. Watch the sunsets from your spacious front deck! Very few new constructions are available. Get in soon and choose some of your finishes.

PROPERTY DETAILS

ParkingGarage	AppliancesIncluded	Heating	Cooling
None	Dishwasher	Gas-Natural	Central
	Dryer		
	Gas Stove		
	Microwave		
	Refrigerator		
	Self Cleaning Oven		
	Washer		

Sewer
Pulaski for Ben Duncan

Berger Realty Inc
3160 Asbury Avenue, Ocean City
Call: 609-399-0076
Email to: bmd@bergerrealty.com

