

Berger Realty

Since 1928



Ocean 17
1670 Boardwalk
Ocean City, NJ 08226
609-391-0500

oc17@BergerRealty.com



5112 Oakwood Blvd
Mays Landing, NJ 08330

Asking \$550,000.00



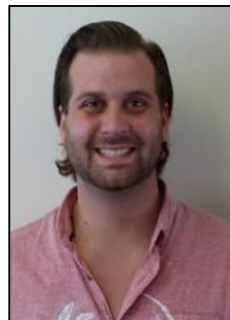
COMMENTS

Don't miss this exceptional opportunity to own a versatile commercial property located in the heart of Mays Landing's industrial park. This well crafted, stick-frame structure boasts superior insulation and radiant heat cement flooring, ensuring a comfortable working environment year-round. Three Bays: Equipped with 8' doors and 12' ceilings, providing ample space for operations. Bright Outdoor Lighting: Enhances productivity during evening hours. Outdoor Arbor: Ideal for enjoying your work in fresh air on pleasant days. Parking: plenty of parking with room to expand. Currently utilized for boat building, however, this property's flexible zoning allows for a variety of uses. Potential applications per the Mayslanding Industrial Business Park code include carpentry, plumbing, electrical supplies, a winery, or a brewery—limitless possibilities to match your business vision. Situated in a thriving industrial park with easy access to major routes. This property is perfect for entrepreneurs seeking a functional space.

PROPERTY DETAILS

Exterior	OutsideFeatures	ParkingGarage	InteriorFeatures
Frame/Wood	Security Light/System	6 to 10 Spaces	Restroom
Stucco	See Remarks		

Basement	Heating	Cooling	HotWater
Slab	Gas-Natural	Wall Units	Gas
	Radiant		
	See Remarks		



Ask for Colin Halliday
Berger Realty Inc
1670 Boardwalk, Ocean City
Call: 609-391-0500
Email to: ceh@bergerrealty.com

