

Berger Realty

Since 1928

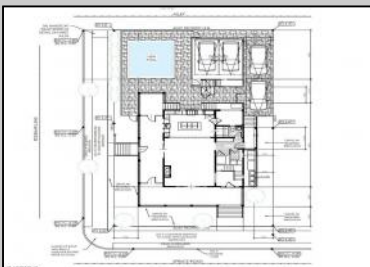
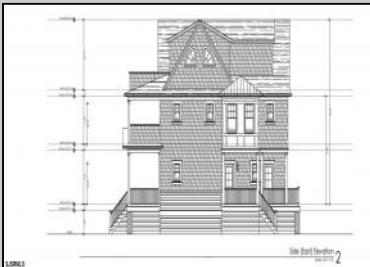


Berger Realty, Inc.
3160 Asbury Avenue
Ocean City, NJ 08226
1-877-237-4371 / 609-399-0076
info@bergerrealty.com



1909 Rosemar
Ocean City, NJ 08226

Asking \$2,950,000.00



Rosemar (West) Elevation 2
Scale: 1/4" = 1'-0"

SJSRMLS

COMMENTS

This Stunning-New home situated on a huge 6,000 Square Foot lot on the island's most sought-after Family-Friendly Riviera neighborhood awaits you! Featuring a 10-year warranty and all the bells and whistles, including an all floor servicing elevator, Top of the Line appliance package, LOW-maintenance siding and railings, and large decks in the front and back with park views. You can move in Summer 2025 and make it your own by selecting your own interior colors and options. Contact the agent for more information and details.

PROPERTY DETAILS

Exterior Vinyl	OutsideFeatures Deck Patio Pool-In Ground Sprinkler System	ParkingGarage Detached Garage Two Car	InteriorFeatures Elevator
AppliancesIncluded Dishwasher Dryer Gas Stove Microwave Refrigerator	Basement Crawl Space	Heating Forced Air Gas-Natural	Cooling Ceiling Fan(s) Central



Ask for Ken Sedberry
Berger Realty Inc.
3160 Asbury Avenue, Ocean City
Call: 609-399-0076
Email to: kas@bergerrealty.com

