

Berger Realty

Since 1928

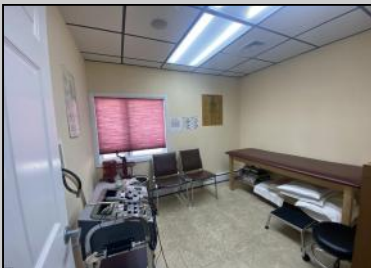
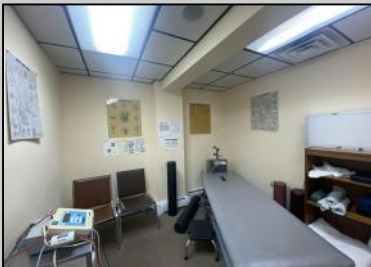
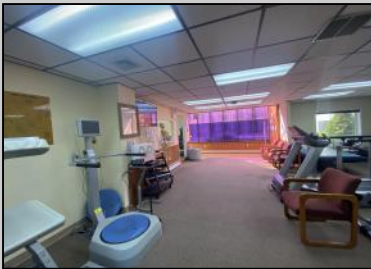


Berger Realty, Inc.
3160 Asbury Avenue
Ocean City, NJ 08226
1-877-237-4371 / 609-399-0076
info@bergerrealty.com



2406 New Rd
Northfield, NJ 08225

Asking \$345,000.00



COMMENTS

This commercial building is in a highly sought-after location on a busy main road in Northfield's business district. Currently used as a rehab facility, it includes four exam rooms, a large open space, two washrooms, a kitchenette, two offices and storage. With three separate entrances, the building offers flexibility, allowing it to be divided for use by multiple businesses. Its location, combined with the practical layout, makes it an ideal investment opportunity in a bustling business area. Seller is motivated. Bring an offer. Seller would like to sell gym and rehab equipment separately.

PROPERTY DETAILS

Exterior Vinyl	OutsideFeatures Security Light/System	ParkingGarage 6 to 10 Spaces	InteriorFeatures Restroom Smoke/Fire Alarm
Heating Baseboard Gas-Natural Hot Water	Cooling Central	HotWater Gas	Water Public

Sewer
Public Sewer



Ask for Evelyn "Evie" Schweibinz
Berger Realty Inc
3160 Asbury Avenue, Ocean City
Call: 609-399-0076
Email to: ems@bergerrealty.com

