

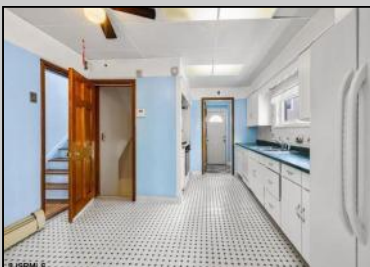
# Berger Realty

Since 1928



Ocean 17  
1670 Boardwalk  
Ocean City, NJ 08226  
609-391-0500

[oc17@BergerRealty.com](mailto:oc17@BergerRealty.com)



**12 Tallahassee**  
**Atlantic City, NJ 08401**

**Asking \$799,000.00**



## COMMENTS

**FOR SALE:** Spacious 3-Story Home – Chelsea, Atlantic City Location: Chelsea Area, Atlantic City – Just 3 Blocks from Ventnor City Bedrooms: 5 + Bonus Rooms Bathrooms: 3.5 Garage: Private Garage with Interior & Exterior Basement Access Additional: Full Finished Basement Property Overview Discover timeless charm and modern functionality in this expansive 3-story single-family home located in the heart of the Chelsea neighborhood of Atlantic City. With close proximity to the beach, boardwalk, and Ventnor City, this property is ideal as a full-time residence, multigenerational living, or investment. Key Features • Enclosed Tiled Front Porch – Welcoming entrance for year-round comfort • Spacious First Floor – Large living room with fireplace, full-size dining room, and eat-in kitchen • Second Floor Layout – 4 large bedrooms + 2 full baths • Third Floor – 2 additional rooms with another full bath – great for office, guests, or studio • Finished Basement – Includes half bath, laundry, utilities, and potential for more rooms or recreation space • Dual Access to Basement – Both interior and exterior entries • Private Garage – Rare for the area and perfect for storage or secure parking Ideal For • Large families • Vacation home buyers • Investors seeking long-term or seasonal rental income • Buyers looking for proximity to Ventnor & Atlantic City amenities

## PROPERTY DETAILS

Exterior	OutsideFeatures	ParkingGarage	InteriorFeatures
Brick	Fenced Yard	Detached Garage	Storage
Concrete		One Car	Walk In Closet



Ask for Christopher Malinowski  
Berger Realty Inc.  
1670 Boardwalk, Ocean City  
Call: 609-391-0500  
Email to: [cma@bergerrealty.com](mailto:cma@bergerrealty.com)



Cooling  
Window Units

HotWater  
Gas

Water  
Public

Sewer  
Public Sewer