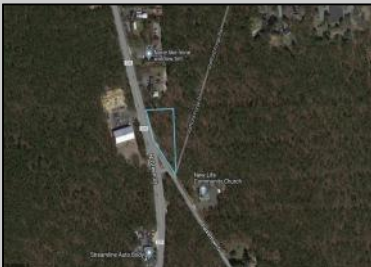
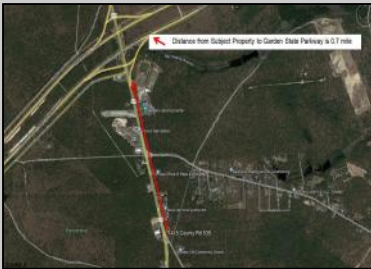


# Berger Realty

Since 1928



Berger Realty, Inc.  
3160 Asbury Avenue  
Ocean City, NJ 08226  
1-877-237-4371 / 609-399-0076  
info@bergerrealty.com



1415 Route 539  
Little Egg Harbor Township, NJ 08087

Asking \$105,000.00



SJSRMLS

## COMMENTS

+/- 1.18 Acres Zoned General Business. Irregular shaped lot with +/- 310' of frontage along N Green Street (Route 539) & 219' of frontage along Parkertown Drive. Great location in a growing market with new commercial construction in the immediate area. This property has tremendous visibility and access, located 1 Mile from Garden State Parkway. Call for marketing package and survey. No current approvals in place.

## PROPERTY DETAILS



Ask for Patricia Moss  
Berger Realty Inc  
3160 Asbury Avenue, Ocean City  
Call: 609-399-0076  
Email to: tcm@bergerrealty.com

