

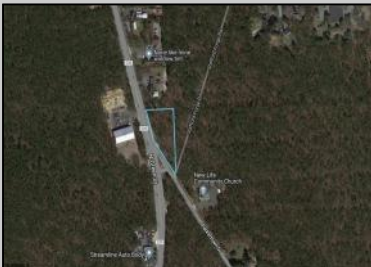
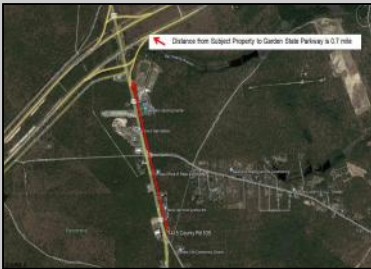
# Berger Realty

Since 1928



Ocean 17  
1670 Boardwalk  
Ocean City, NJ 08226  
609-391-0500

[oc17@BergerRealty.com](mailto:oc17@BergerRealty.com)



1415 Route 539  
Little Egg Harbor Township, NJ 08087

Asking \$105,000.00



SJSRMLS

## COMMENTS

+/- 1.18 Acres Zoned General Business. Irregular shaped lot with +/- 310' of frontage along N Green Street (Route 539) & 219' of frontage along Parkertown Drive. Great location in a growing market with new commercial construction in the immediate area. This property has tremendous visibility and access, located 1 Mile from Garden State Parkway. Call for marketing package and survey. No current approvals in place.

## PROPERTY DETAILS



Ask for Grant Halliday  
Berger Realty Inc  
1670 Boardwalk, Ocean City  
Call: 609-391-0500  
Email to: [geh@bergerrealty.com](mailto:geh@bergerrealty.com)

