

Berger Realty

Since 1928

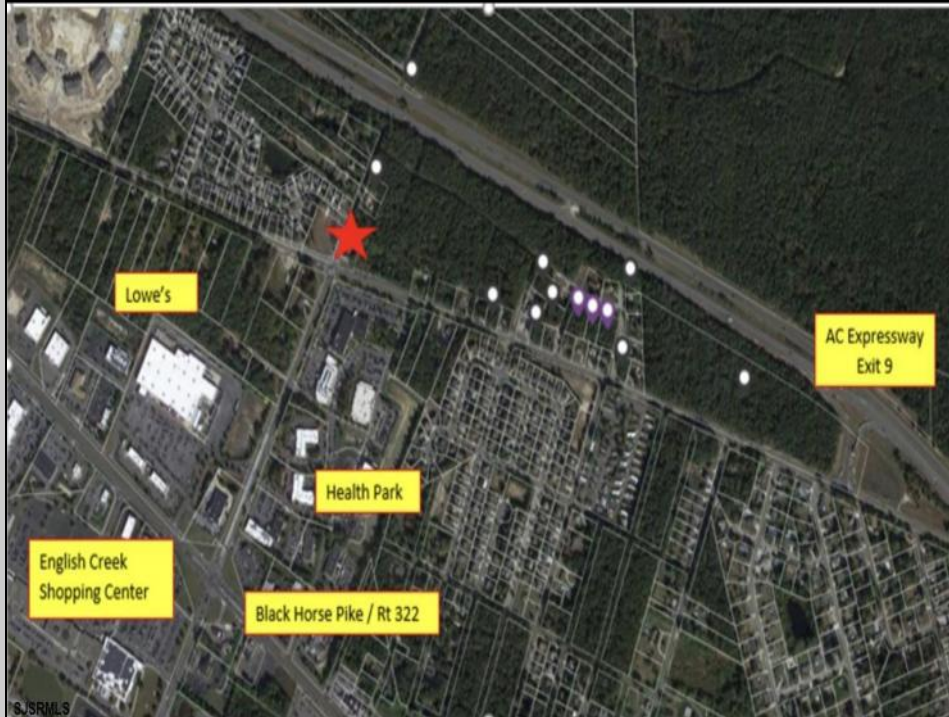


Berger Realty, Inc.
3160 Asbury Avenue
Ocean City, NJ 08226
1-877-237-4371 / 609-399-0076
✉ info@bergerrealty.com



6220 Delilah
Egg Harbor Township, NJ 08234

Asking \$8,500,000.00



COMMENTS

Prime Land For Sale. Total 54+/- sf. Multiple lots makes up the 54+/- acres. Dual zoning. PO-1 and RG5. Prior approvals for 175 residential units. Near shopping hub of Atlantic County. Close to ShopRite, AtlantiCare Health Park and Life Center, AC Expressway, Walgreen's, Lowe's, many restaurants and convenience food.

PROPERTY DETAILS



Ask for Donna Brown
Berger Realty Inc
3160 Asbury Avenue, Ocean City
Call: 609-399-0076
Email to: dmb@bergerrealty.com

