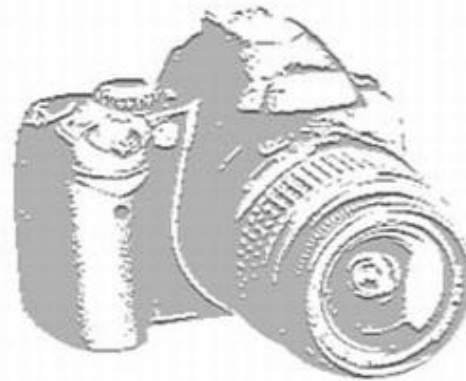




487 Woodlane Road
Mount Holly, NJ 08060

Asking \$309,850.00

PHOTO NOT AVAILABLE

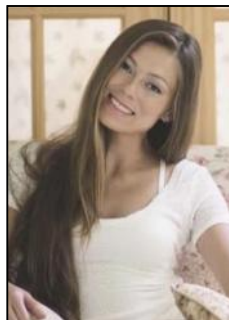


COMMENTS

PRIME CORNER LOCATION SURROUNDED BY NATIONAL TENANTS. LOCATED AT A MAJOR INTERSECTION WITH A TRAFFIC LIGHT, MINUTES FROM I-295. PROPERTY CONSISTS OF APPX 2,000 SF, CURRENTLY LEASED/UTILIZED AS AN AUTO SHOP. NEARBY TENANTS INCLUDE WALGREENS, FAMILY DOLLAR, DUNKIN, SUBWAY, AND WAWA.

PROPERTY DETAILS

Exterior Block	OutsideFeatures See Remarks Sign	Basement Slab	Heating Forced Air
Water Public	Sewer Public Sewer		



Ask for Margarita Kobilianets
Berger Realty Inc
1670 Boardwalk, Ocean City
Call: 609-391-0500
Email to: mak@bergerrealty.com

