

# Berger Realty

Since 1928



Berger Realty, Inc.  
3160 Asbury Avenue  
Ocean City, NJ 08226  
1-877-237-4371 / 609-399-0076  
✉ [info@bergerrealty.com](mailto:info@bergerrealty.com)



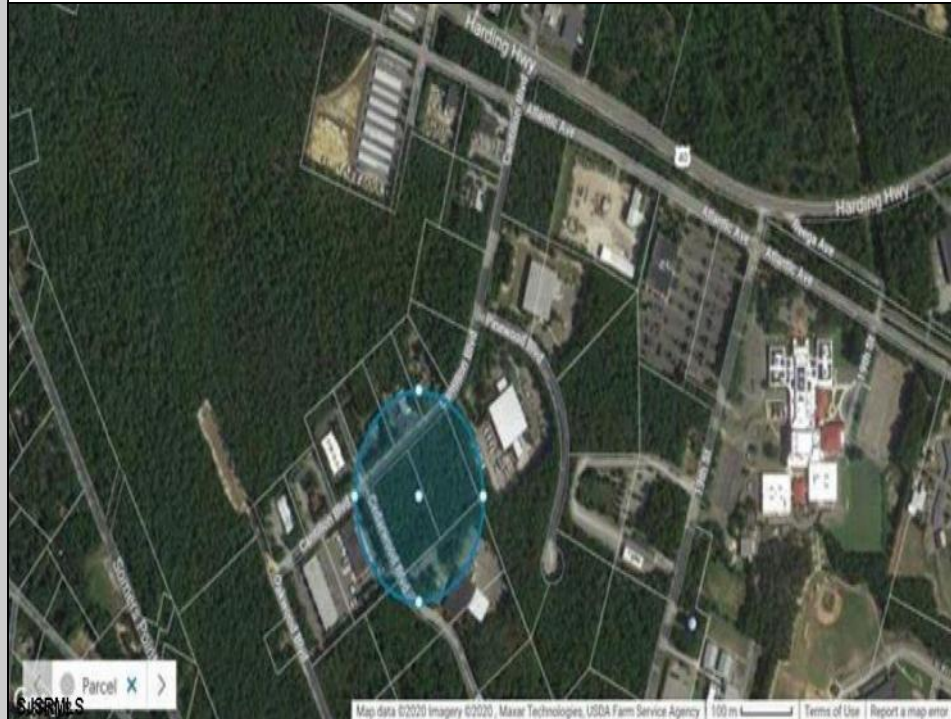
420property



420property

**1410 Cantillon Blvd  
Mays Landing, NJ 08330**

**Asking \$560,000.00**



#### COMMENTS

Hamilton Twp. fully approved lot in Atlantic County. Hamilton Business Park allows for offices, warehouses, light manufacturing, medical facility, banks, gyms, general business. (all subject to approvals) This 5.33 Acre lot has all approvals to build a 40,000 sq. ft building for an approved business. All Pinelands leg work has been completed and approved ready to start construction with approved building plans. As per township of Hamilton ammendment to the Redevelopment plan, County of Atlantic, State of NJ to permit Cannabis Cultivation subject to following special requirements of the AG district. Offering 5 year tax incentive program for construction in the Industrial Business Park Zone.

#### PROPERTY DETAILS



Ask for J.K. Hepner, III  
Berger Realty Inc  
3160 Asbury Avenue, Ocean City  
Call: 609-399-0076  
Email to: [jkh@bergerrealty.com](mailto:jkh@bergerrealty.com)

