

Berger Realty

Since 1928

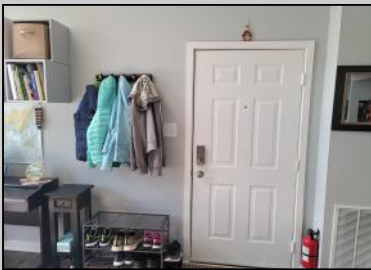
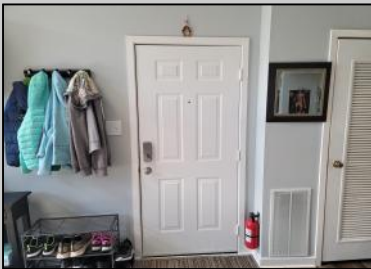


Berger Realty, Inc.
3160 Asbury Avenue
Ocean City, NJ 08226
1-877-237-4371 / 609-399-0076
info@bergerrealty.com



282 Heather Croft
Egg Harbor Township, NJ 08234

Asking \$184,800.00



COMMENTS

Do not miss this rare, top floor unit in desirable Heather Croft Condominium, facing the forest and allowing you to enjoy a nature scene. The property is located at a super quiet and tranquil part of the complex. This freshly painted, beautifully updated unit is priced right on the money. It features stainless steel appliances, 42 inch hardwood cabinets and granite countertop and a deep sink. Cathedral ceilings, allow a lot of light to penetrate in the living room and along with the wood pattern waterproof laminate floor give a cozy feeling of warmth and comfort. The vanity has granite countertop. The bathtub was also replaced with new and wider one. Easily accessible additional space above the apartment can be used as storage. Plenty of parking space available only on that side of Heather Croft. This is an ideal situation for an investor! Brand new refrigerator purchased August, 1st of 2024 Emotional support dogs are allowed only with proper permits.

PROPERTY DETAILS

Exterior Vinyl	ParkingGarage None	InteriorFeatures Skylight	Heating Forced Air Gas-Natural
Cooling Central Electric	HotWater Electric	Water Public Water	Sewer Public Sewer



Ask for Domenic Ballerini
Berger Realty Inc
3160 Asbury Avenue, Ocean City
Call: 609-399-0076
Email to: dvb@bergerrealty.com

