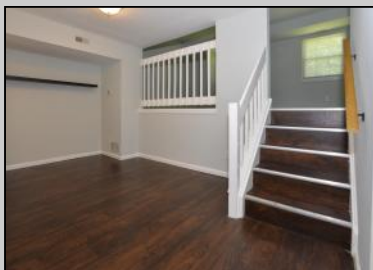


# Berger Realty

Since 1928



Berger Realty, Inc.  
3160 Asbury Avenue  
Ocean City, NJ 08226  
1-877-237-4371 / 609-399-0076  
info@bergerrealty.com



5006 Laydon Ct  
Mays Landing, NJ 08330

Asking \$269,500.00



## COMMENTS

Just in time for summer enjoy all the amenities offered at Oakcrest Estates including an inground pool, tennis and basketball courts, playground, picnic area, and walking trail. This 1800+ square foot, end unit townhome features four bedrooms and 3.5 baths. New roof installed in 2018 and new approximately 240 sq. ft. fiberglass deck completed in October 2020. Private side entrance leads to a fenced backyard. As you enter you will find a recently updated kitchen with new stainless-steel sink and faucet, dining area, spacious living room, and half bath. The next level opens up to three bedrooms, including a master suite, and another full bath. It doesn't end there though as you will find another huge bedroom and full bath on the top floor. This space could be used for a variety of purposes including a gaming area, family room, office, etc. Access the new, private fiberglass deck from this level that overlooks the fenced-in back yard. The basement is where you will find the washer and dryer, and offers ample storage and a back door that exits to the yard. Oakcrest Estates is conveniently located near Atlantic Cape Community College and Hamilton Mall area and provides easy access to major highways leading to Philadelphia, Atlantic City, and other shore points.

## PROPERTY DETAILS

ParkingGarage	OtherRooms	InteriorFeatures	AppliancesIncluded
None	Dining Room	Carbon Monoxide Detector Smoke/Fire Alarm	Dishwasher Dryer Electric Stove Refrigerator Washer



Ask for Michelle Benson  
Berger Realty Inc  
3160 Asbury Avenue, Ocean City  
Call: 609-399-0076  
Email to: mb@bergerrealty.com  
Sewer  
Public Sewer

