

# Berger Realty

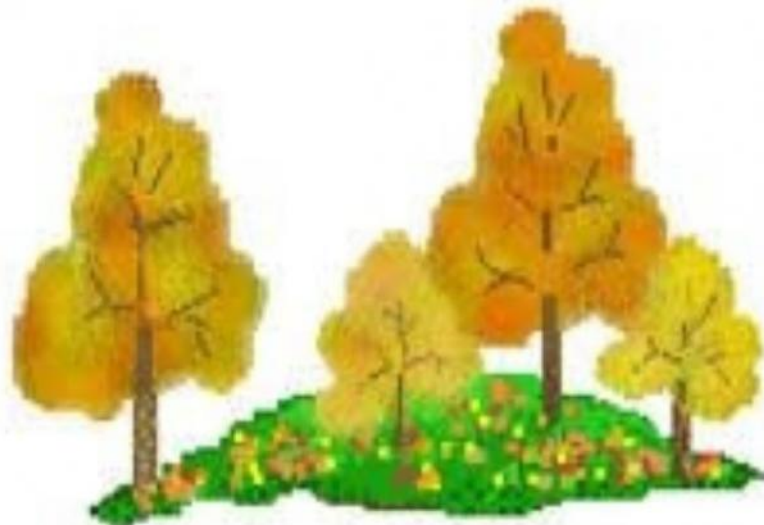
Since 1928



Berger Realty, Inc.  
3160 Asbury Avenue  
Ocean City, NJ 08226  
1-877-237-4371 / 609-399-0076  
✉ [info@bergerrealty.com](mailto:info@bergerrealty.com)



New York Ave Corner of New York ave and Great Creek rd  
Galloway Township, NJ 08205 **Asking \$159,000.00**



## Land For Sale

SJSRMLS

### COMMENTS

Vacant land. Property had buildings on it at one time, all removed. Zoned CC2, Community Commercial 2 which means you can put almost anything there.

### PROPERTY DETAILS



Ask for Donald Edwards  
Berger Realty Inc  
3160 Asbury Avenue, Ocean City  
Call: 609-399-0076  
Email to: [dwe@bergerrealty.com](mailto:dwe@bergerrealty.com)

