

Berger Realty

Since 1928



Berger Realty, Inc
1330 Bay Avenue
Ocean City, NJ 08226
609-391-1330/609-391-1300
info@bergerrealty.com



12-20, 36,38,42 Massachusetts
Atlantic City, NJ 08401

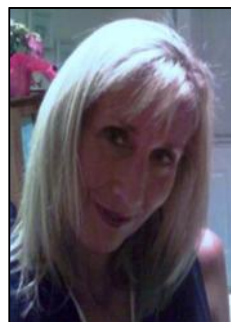
Asking \$675,000.00



COMMENTS

DEVELOPER/INVESTOR ALERT! There are 11 lots in total located between N. Massachusetts and N. Congress and Grammercy Pl. and Atlantic Ave. The lots available on this block all zoned RM-1, a multifamily district established primarily to foster family-oriented options. This is a prime area to build a fresh concept in this hot market with the boardwalk, Ocean Casino and beach right down the street and Gardner's Basin/inlet nearby. There is approximately 30,000 buildable square feet available with this combination of lots. Call us for the prior plans, we'll layout the possibilities for you. Don't miss this unique development opportunity!

PROPERTY DETAILS



Ask for Karen J. Manley
Berger Realty Inc
1330 Bay Avenue, Ocean City
Call: 609-391-1330
Email to: kjm@bergerrealty.com

