

Berger Realty

Since 1928



Berger Realty, Inc.
3160 Asbury Avenue
Ocean City, NJ 08226
1-877-237-4371 / 609-399-0076
info@bergerrealty.com



38 Massachusetts
Atlantic City, NJ 08401

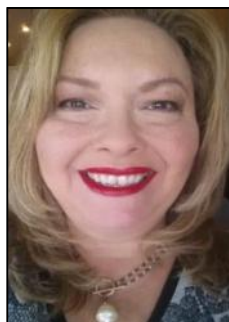
Asking \$85,000.00



COMMENTS

DEVELOPER/INVESTOR ALERT! This single lot is located at 38 N. Massachusetts and is 52.5' x 95'. There are several lots available on this block all zoned RM-1, a multifamily district established primarily to foster family-oriented options. This is a prime area to build in this a fresh concept in this hot market with the boardwalk, Ocean Casino and beach right down the street and Gardner's Basin/inlet nearby. Single lots for sale or any combination of multiple lots from Grammercy between N. Congress and N. Massachusetts. Call us for prior plans, we'll layout the possibilities for you. Don't miss this unique development opportunity!

PROPERTY DETAILS



Ask for Theresa Maina
Berger Realty Inc
3160 Asbury Avenue, Ocean City
Call: 609-399-0076
Email to: tam@bergerrealty.com

