

# Berger Realty

Since 1928



Berger Realty, Inc.  
3160 Asbury Avenue  
Ocean City, NJ 08226  
1-877-237-4371 / 609-399-0076  
info@bergerrealty.com



410 Mill Road  
Pleasantville, NJ 08232

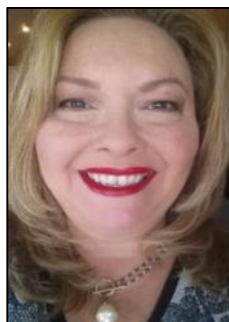
Asking \$500,000.00



### COMMENTS

PRIME LOCATION WITH BILLBOARD! Located conveniently at Exit 5 on the AC Expressway, this central parcel offers easy access and high visibility, making it perfect for commercial development. Spanning over 2 acres, the prime, buildable lot is ready for construction and tailored development to suit various business needs. Included in the sale is a billboard with an existing lease, providing an immediate source of advertising revenue or the option to promote your own business. The commercial zoning of the lot allows for a diverse range of business opportunities, ideal for retail, office buildings, or specialty commercial facilities. For more information or to schedule a viewing, please contact us today.

### PROPERTY DETAILS



Ask for Theresa Maina  
Berger Realty Inc  
3160 Asbury Avenue, Ocean City  
Call: 609-399-0076  
Email to: tam@bergerrealty.com

