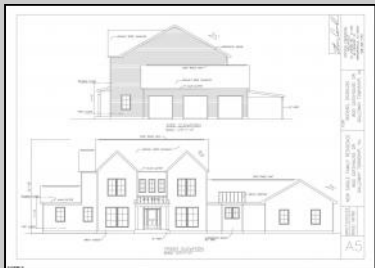
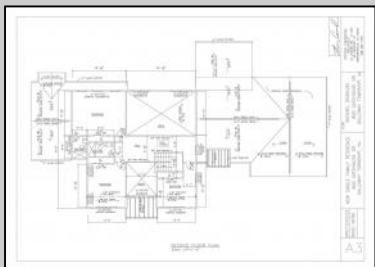
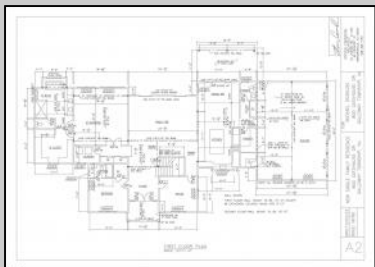
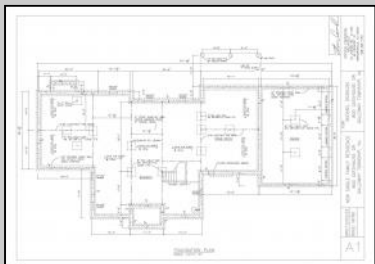


**800 Gatehouse
Leeds Point, NJ 08205**

Asking \$1,549,000.00



SJSRMLS

COMMENTS

Discover your dream home in the prestigious Iron Gate community, perfectly positioned at the end of a serene cul-de-sac. This remarkable new construction spans over 4,000 square feet of luxurious living space, complemented by a fully finished 2,400-square-foot basement, all situated on a sprawling acre in the heart of Leeds Point. This exquisite home features five spacious bedrooms and 4.5 well-appointed bathrooms. The primary suite, located on the first floor, offers a sanctuary with a grand bathroom, expansive walk-in closet, and soaring 12-foot ceilings. Convenience is key with an adjacent laundry room. The residence boasts triple-glazed, tempered glass windows throughout, enhancing comfort and energy efficiency. These include large 96x84 and 84x84 windows that fill the home with natural light. The family room features a 16x10 bi-fold exterior door, promoting seamless indoor/outdoor living, while the dining room opens to an outdoor dining area through a 12x8 bi-fold door, both sets crafted from double and triple-glazed, tempered glass. The striking 10ftx10ft triple-glaze tempered glass entry door sets a grand tone for the entrance. Hardwood floors run throughout the home, linking the spaces with elegance. The substantial living room, with its 22-foot ceilings and cozy fireplace, invites relaxation and social gatherings. The gourmet kitchen is a chef's delight, equipped with top-of-the-line Viking stainless steel appliances, quartz countertops, and 42-inch cabinets. It, along with the adjacent dining room, features 12-foot ceilings, creating an open and inviting atmosphere ideal for hosting. The possibilities are expansive with the 2,400-square-foot finished basement—perfect for additional storage, entertainment space, or an extra home office. This level also accommodates the home's dual-zone HVAC system and a tankless hot water heater for unparalleled comfort and efficiency. Parking is simplified with a three-car garage, each bay featuring an automatic door opener, and a spacious 90-foot driveway. The rear of the property is an idyllic sanctuary, complete with a large covered patio that overlooks the tranquil one-acre yard, providing the perfect backdrop for outdoor gatherings and celebrations. Architectural plans were designed by Considine Design Studio.

PROPERTY DETAILS

Exterior	OutsideFeatures	ParkingGarage	OtherRooms
Vinyl	Patio	Attached Garage	Den/TV Room
	Paved Road	Auto Door Opener	Dining Room
		Three or More Cars	Eat In Kitchen
			Laundry/Utility Room
			Library/Study
			Loft
			Pantry
			Recreation/Family

Berger Realty

Since 1928



Berger Realty, Inc
1330 Bay Avenue
Ocean City, NJ 08226
609-391-1330/609-391-1300
info@bergerrealty.com



Primary BR on 1st floor

InteriorFeatures	AppliancesIncluded	Basement	Heating
Cathedral Ceiling	Dishwasher	Finished	Forced Air
Carbon Monoxide	Dryer	Full	Gas-Natural
Detector	Gas Stove	Heated	
Kitchen Center Island	Microwave		
Storage	Refrigerator		
Smoke/Fire Alarm	Washer		
Walk In Closet			
Cooling	HotWater	Water	Sewer
Central	Tankless-gas	Well	Septic
Electric			



Ask for Margaret M. Kurz
Berger Realty Inc
1330 Bay Avenue, Ocean City
Call: 609-391-1330
Email to: mmk@bergerrealty.com

