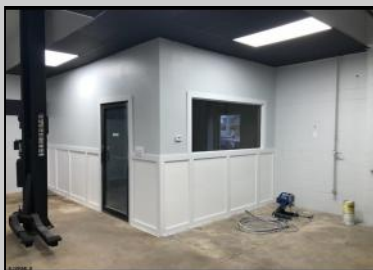
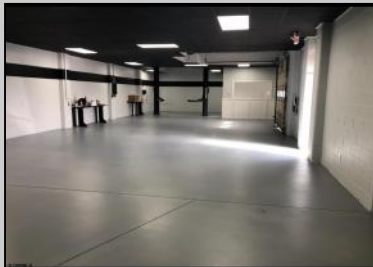




1635 Albany Ave
Atlantic City, NJ 08401

Asking \$799,000.00



COMMENTS

Great Highway location in Atlantic City with 25,000 average vehicles per day. Highway commercial zoning which opens the uses to almost any commercial use. Auto related, sales, shop, detailing, medical, office, warehousing, retail, restaurant and bar. Building has an open lay out for the most part for easy fit out with parking for over 35 vehicles. Also available for lease at \$5000 per month in separate listing. Easy to show.

PROPERTY DETAILS

Exterior Block Stucco	OutsideFeatures Truck Door	ParkingGarage 11 or More Spaces	InteriorFeatures 220 Volt Electricity Hydraulic Lift Restroom
Basement Slab	Heating Gas-Natural	Cooling Wall Units	HotWater Electric



Ask for Kevin Laskowski
Berger Realty Inc
1670 Boardwalk, Ocean City
Call: 609-391-0500
Email to: kml@bergerrealty.com

