

Berger Realty

Since 1928



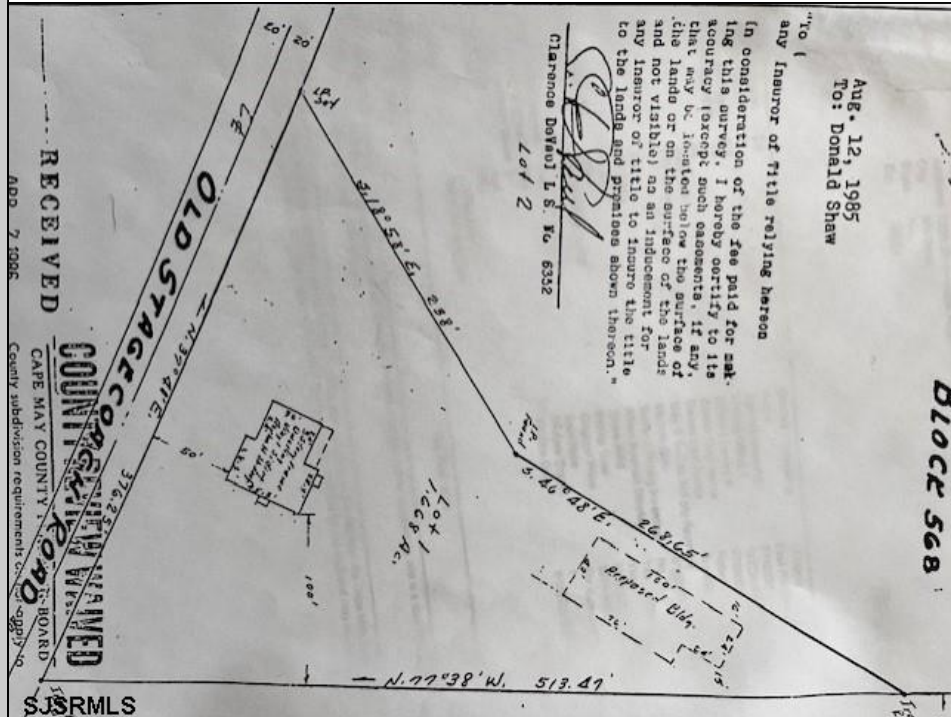
Berger Realty, Inc.
55th & Haven Avenue
Ocean City, NJ 08226
609-399-0040

info@bergerrealty.com



1299 Stagecoach
Palermo, NJ 08230

Asking \$299,900.00



COMMENTS

Commercial lot in a great location in Upper Township. Property has a foundation which might be useable. Second old foundation on the property that had never been used.

PROPERTY DETAILS



Ask for James P. Monroe
Berger Realty Inc
109 E 55th St., Ocean City
Call: 609-399-4211
Email to: jmp@bergerrealty.com

