

# Berger Realty

Since 1928



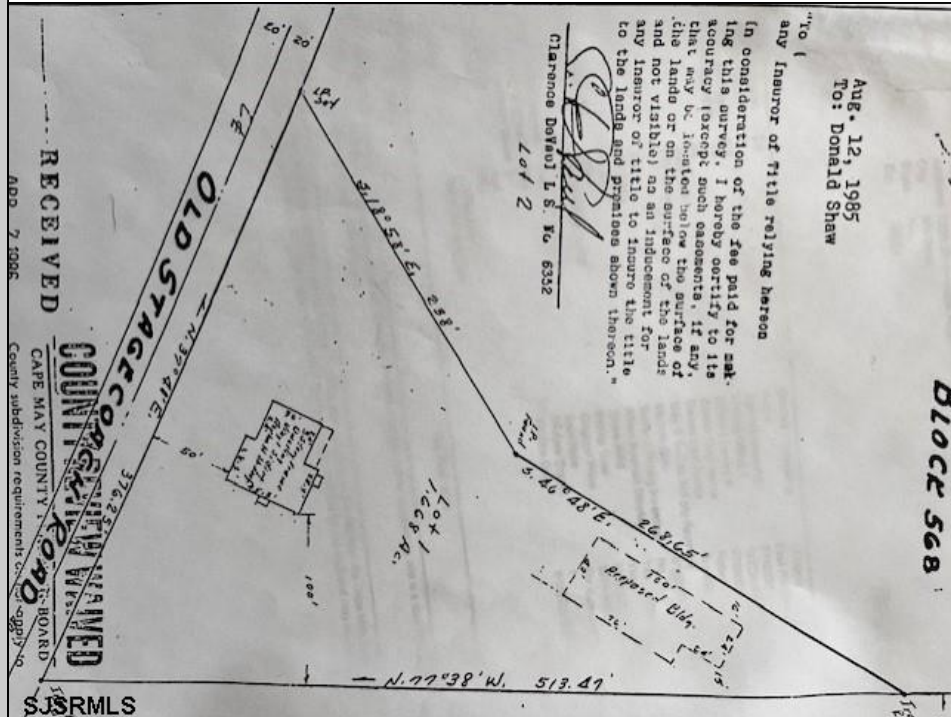
Berger Realty, Inc.  
55th & Haven Avenue  
Ocean City, NJ 08226  
609-399-0040

info@bergerrealty.com



1299 Stagecoach  
Palermo, NJ 08230

Asking \$299,900.00



#### COMMENTS

Commercial lot in a great location in Upper Township. Property has a foundation which might be useable. Second old foundation on the property that had never been used.

#### PROPERTY DETAILS



Ask for Ellen L. Senft  
Berger Realty Inc  
109 E 55th St., Ocean City  
Call: 609-399-4211  
Email to: els@bergerrealty.com

