

Berger Realty

Since 1928



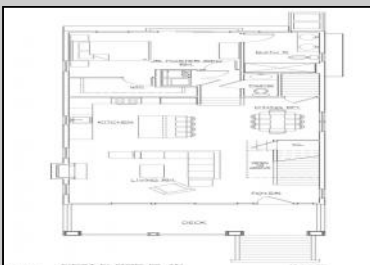
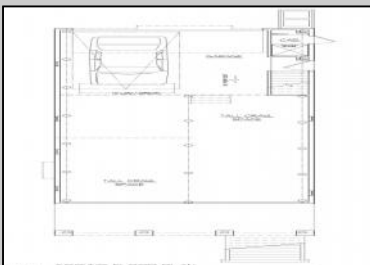
Ocean 17
1670 Boardwalk
Ocean City, NJ 08226
609-391-0500

oc17@BergerRealty.com



1217 Haven
Ocean City, NJ 08226

Asking \$1,695,000.00



HAVEN AVE. ELEVATION

COMMENTS

Another stunning new construction single family home built by STAR Builders! This beauty comes with fantastic amenities and features, and includes 5 spacious bedrooms with 4.5 luxury baths! The gourmet chef's kitchen features upscale cabinetry, SS appliances, and beautiful granite/quartz counters with a designer tile backsplash and under-counter lighting. The kitchen flows seamlessly into the large living room with gas fireplace and dining area. The home also features hardwood flooring in the great room, stairs, and hallway, 2-zone gas heat and central air, tiled shower & bath, elevated vanities in bathrooms, tilt-in windows, a maintenance-free exterior, 2-car garage, large lot (30 x 115), and more! This home is an absolute must see. Plans and specs available. Great Location! (close to beach, boardwalk and shopping) Great New Construction! (quality builder) Great Value! See you on the Beach!

PROPERTY DETAILS

| | | | |
|----------------|--------------------|------------------|----------------------|
| Exterior | Outside Features | Parking Garage | Other Rooms |
| Vinyl | Curbs | Attached Garage | Dining Room |
| | Deck | Auto Door Opener | Eat In Kitchen |
| | Enclosed | Outside Two Car | Great Room |
| | Shower | | Laundry/Utility Room |
| | Paved Road | | Pantry |
| | Porch | | Storage Attic |
| | Sidewalks | | |
| | Appliances | Basement | Heating |
| | Disposal | Crawl Space | Forced Air |
| | Dryer | Slab | |
| | Gas Stove | | |
| | Mid-Century | | |
| | Refrigerator | | |
| | Self Cleaning Oven | | |
| | Washer | | |
| Cooling | Hot Water | Water | Sewer |
| Ceiling Fan(s) | Gas | Public | Public Sewer |
| Central | | | |
| Multi-Zoned | | | |



Ask for Troy Eggle
Berger Realty Inc.
1670 Boardwalk, Ocean City
Call: 609-391-0500
Email: tde@bergerrealty.com

