

Berger Realty

Since 1928



Berger Realty, Inc.
3160 Asbury Avenue
Ocean City, NJ 08226
1-877-237-4371 / 609-399-0076
info@bergerrealty.com



101 DUNLIN LANE
Egg Harbor Township, NJ 08234

Asking \$329,000.00



SJSRMLS

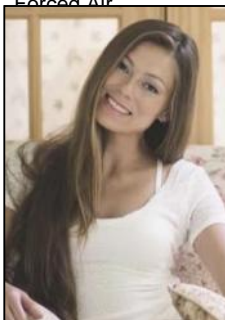
COMMENTS

BEAUTIFUL AND SPACIOUS 2400 SQ FT CORNER LOCATION LUXURY TOWNHOUSE AT BAYPORT ON LAKE'S BAY HAS BEEN UPGRADED WITH EVERY AMENITY! 3 LARGE BEDROOMS AND 3.5 BATHS, LIVING ROOM, DINING ROOM, EAT-IN-ISLAND KITCHEN WITH 42" MAPLE CABINETS AND STAINLESS STEEL APPLIANCES, FAMILY ROOM, MASTERSUITE WITH GARDEN TUB AND TILED SHOWER, WIC, HARDWOOD AND TILE FLOORS, 2 ZONE HVAC, DECK, GARAGE, CLUBHOUSE, POOL, FITNESS CENTER, BEACH, BAY AND MUCH MORE IN A GREAT NEIGHBORHOOD! SOME FINISHES MAY BE DIFFERENT THAN AS SHOWN.

PROPERTY DETAILS

Exterior	ParkingGarage	OtherRooms	InteriorFeatures
Stone	Attached Garage	Dining Room	Foyer
Vinyl	Auto Door Opener	Eat In Kitchen	Kitchen Center Island
	One Car	Laundry/Utility Room	Master Bath
		Pantry	Pets Allowed
		Recreation/Family	
		Storage Attic	

Heating	Cooling	HotWater	Water
Forced Air	Ceiling Fan(s)	Gas	Public Water
	Central		



Margarita Kobilianets

Berger Realty Inc
3160 Asbury Avenue, Ocean City
Call: 609-399-0076
Email to: mak@bergerrealty.com

