

Berger Realty

Since 1928

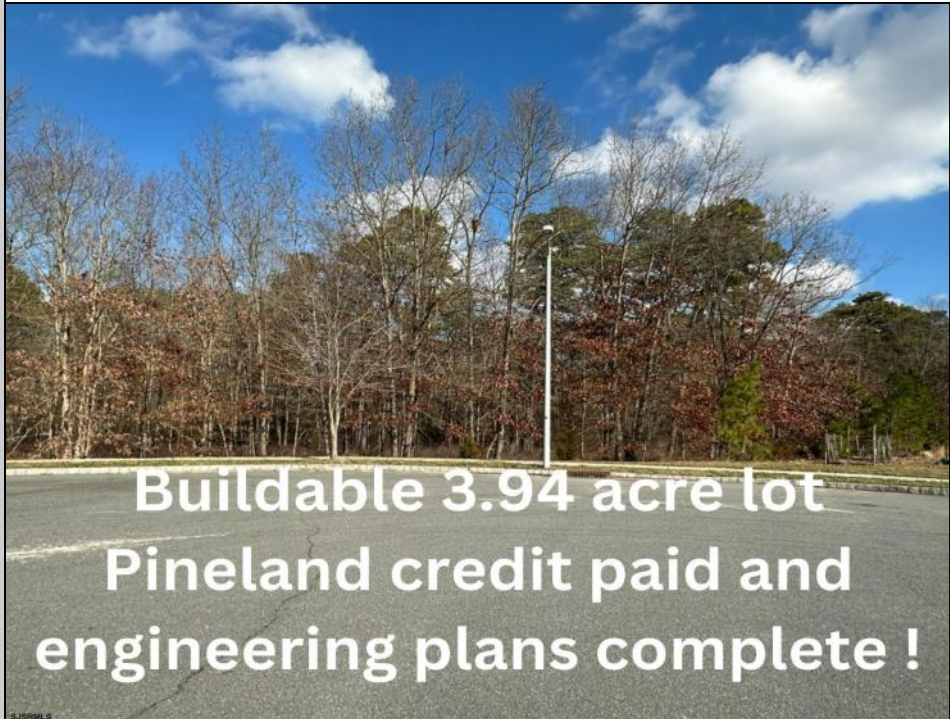


Berger Realty, Inc.
3160 Asbury Avenue
Ocean City, NJ 08226
1-877-237-4371 / 609-399-0076
info@bergerrealty.com



4011 Ridge
Egg Harbor Township, NJ 08234

Asking \$65,000.00



COMMENTS

3.9 Acres of beautiful wooded oasis centrally located off of West Jersey Ave in Egg Harbor Twp. Pinelands approved and Pinelands credit PAID! Septic design complete. Gas at street. Property is ready to build your dream home. Curb and sidewalk have been waived.

PROPERTY DETAILS



Ask for Ken Sedberry
Berger Realty Inc
3160 Asbury Avenue, Ocean City
Call: 609-399-0076
Email to: kas@bergerrealty.com
http://www.buytheshore.com

