

Berger Realty

Since 1928

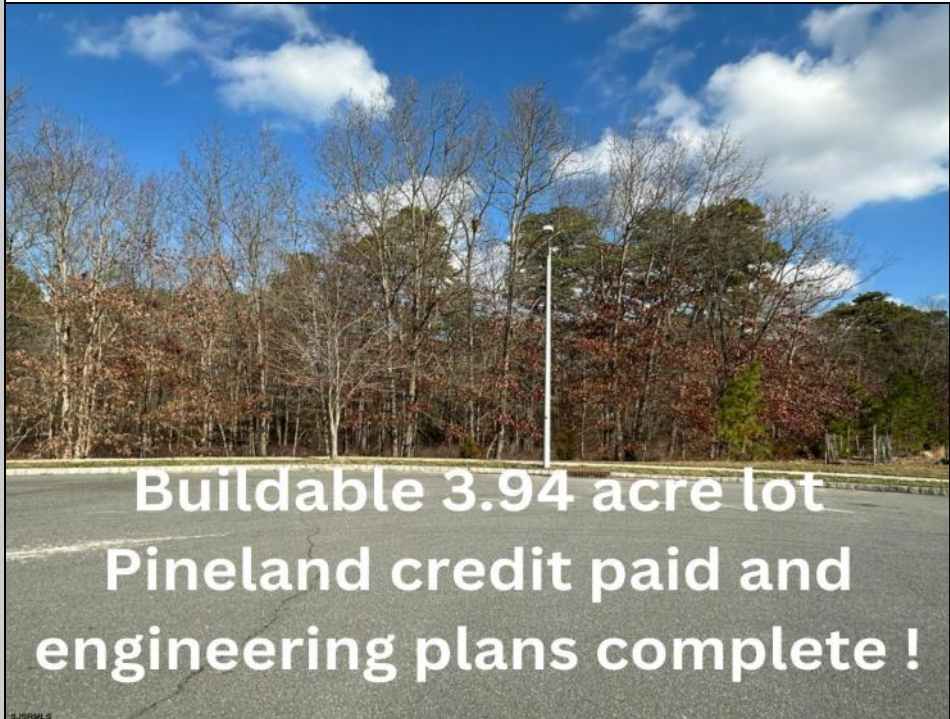


Berger Realty, Inc.
3160 Asbury Avenue
Ocean City, NJ 08226
1-877-237-4371 / 609-399-0076
✉ info@bergerrealty.com



4011 Ridge
Egg Harbor Township, NJ 08234

Asking \$65,000.00



Buildable 3.94 acre lot
Pineland credit paid and
engineering plans complete !

COMMENTS

3.9 Acres of beautiful wooded oasis centrally located off of West Jersey Ave in Egg Harbor Twp. Pinelands approved and Pinelands credit PAID! Septic design complete. Gas at street. Property is ready to build your dream home. Curb and sidewalk have been waived.

PROPERTY DETAILS



Ask for Donald Edwards
Berger Realty Inc
3160 Asbury Avenue, Ocean City
Call: 609-399-0076
Email to: dwe@bergerrealty.com

