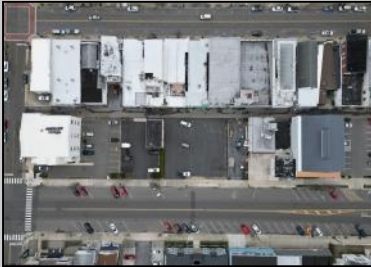


Berger Realty

Since 1928



Berger Realty, Inc.
3160 Asbury Avenue
Ocean City, NJ 08226
1-877-237-4371 / 609-399-0076
✉ info@bergerrealty.com



**727-731 West
Ocean City, NJ 08226**

Asking \$1,500,000.00



COMMENTS

Double Lot!! 60ft x 90ft Mixed Use Lot Located in the Downtown Area of Ocean City! Zoned Drive-In Business, Which Opens Up a Ton of Opportunities! Combine Commercial AND Multiple Residential units! Can Even Build 2 Single Family Homes! Professional Offices, Retail, Health Care Facilities, Banks, Restaurants, Including Fast-Food, Warehousing & Storage, Churches, Car Washes. You Name It!

PROPERTY DETAILS



Ask for Tanya Pinkerton
Berger Realty Inc
3160 Asbury Avenue, Ocean City
Call: 609-399-0076
Email to: tp@bergerrealty.com

