

Berger Realty

Since 1928



Berger Realty, Inc.
3160 Asbury Avenue
Ocean City, NJ 08226
1-877-237-4371 / 609-399-0076
info@bergerrealty.com



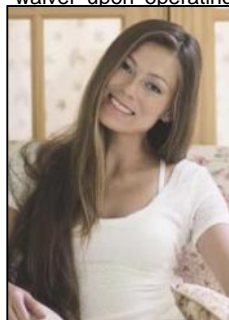
107 Old Goshen Rd
Cape May Court House, NJ 08210

Asking \$499,900.00



COMMENTS

Exceptional Healthcare Facility Opportunity in Dennis Twp, NJ South Seaville Manor Auxiliary, Inc., a 501c (3) Non-Profit Organization, offers an exclusive opportunity with this Residential Health Care Facility (RHCF) and Hospice located in the peaceful Cape May County. This property, designed to serve the terminally ill and disabled, is ideal for investors or organizations looking to make a meaningful impact in healthcare services. This property presents a rare chance to develop a compassionate and much-needed healthcare facility in a community eagerly awaiting such services. The serene location combined with the significant square footage and existing approvals make it an ideal investment for specialized healthcare providers or non-profit organizations. Exceptional Healthcare Facility Opportunity in Dennis Twp, NJ South Seaville Manor Auxiliary, Inc., a 501c (3) Non-Profit Organization, offers an exclusive opportunity with this Residential Health Care Facility (RHCF) and Hospice located in the peaceful Cape May County. This property, designed to serve the terminally ill and disabled, is ideal for investors or organizations looking to make a meaningful impact in healthcare services. Property Details: Type: Residential, suitable for conversion to RHCF and Hospice. Year Constructed: 1975. Interior Space: 6,852 sq ft. Acreage: 0.6 acres. Current Status: The building has been vacant for 20 years, primarily used for storage. Features: Capacity: Plans for 20 private rooms with private baths for each resident. Utilities: Electricity (Atlantic City Electric), natural gas (South Jersey Gas), and broadband internet (Comcast Cable, Verizon DSL). Tax Benefits: Eligible for tax-free waiver upon operating. Investment Highlights: Unique Offering: The only non-profit RHCF in thern New Jersey. (Our understanding) Development Potential: Requires ations were approximately completed around 2000. Approvals: Existing property, helping with ease of transition. This property presents a rare compassionate and much-needed healthcare facility in a community service and any location combined with significant square footage and existing approvals make it an ideal investment for specialized healthcare organizations. Please see the video tour and schedule a viewing today.



Ask for Margarita Kominakis

Berger Realty Inc

3160 Asbury Avenue Ocean City

Call: 609-399-0076

Email to: mak@bergerrealty.com

PROPERTY DETAILS

