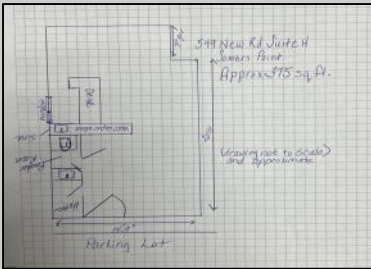




549 New Somers Point, NJ 08244

Asking \$89,000.00



COMMENTS

Move your business close to the beach! End Unit Condo suite available immediately. Plenty of parking. Located on Route 9(New Rd.) so easy for people to find you. Private restroom in unit and service sink. Quick close available, make an offer and move your business on in! \$131.06 HOA includes CA gas, landscaping, bldg maintenance, water/sewer, trash and snow removal

PROPERTY DETAILS

Exterior Frame/Wood	OutsideFeatures Restrooms Sign	ParkingGarage 11 or More Spaces Off Street	InteriorFeatures 220 Volt Electricity Restroom
Basement Crawl Space	Heating Forced Air Gas-Natural	Cooling Central	HotWater Electric
Water Public	Sewer Public Sewer		



Ask for Jeff Thompson
Berger Realty Inc
3160 Asbury Avenue, Ocean City
Call: 609-399-0076
Email to: jst@bergerrealty.com

