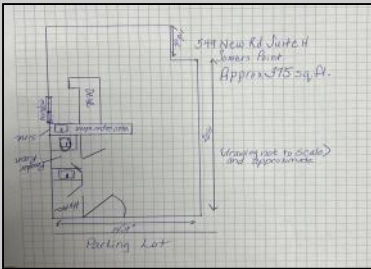




**549 New Somers Point, NJ 08244**

**Asking \$89,000.00**



**COMMENTS**

Move your business close to the beach! End Unit Condo suite available immediately. Plenty of parking. Located on Route 9(New Rd.) so easy for people to find you. Private restroom in unit and service sink. Quick close available, make an offer and move your business on in! \$131.06 HOA includes CA gas, landscaping, bldg maintenance, water/sewer, trash and snow removal

**PROPERTY DETAILS**

|                         |                                      |  |  |
|-------------------------|--------------------------------------|--|--|
| Exterior<br>Frame/Wood  | OutsideFeatures<br>Restrooms<br>Sign | ParkingGarage<br>11 or More Spaces<br>Off Street | InteriorFeatures<br>220 Volt Electricity<br>Restroom |
| Basement<br>Crawl Space | Heating<br>Forced Air<br>Gas-Natural | Cooling<br>Central                               | HotWater<br>Electric                                 |
| Water<br>Public         | Sewer<br>Public Sewer                |  |  |



Ask for John Greiner  
 Berger Realty Inc  
 3160 Asbury Avenue, Ocean City  
 Call: 609-399-0076  
 Email to: jag@bergerrealty.com

