

Berger Realty

Since 1928

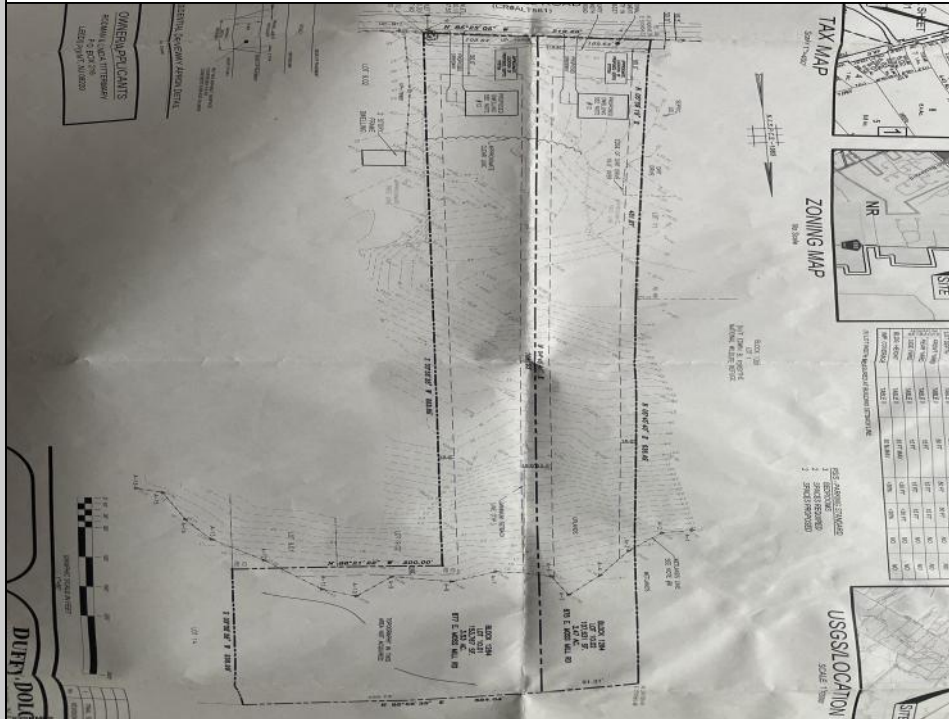


Berger Realty, Inc.
3160 Asbury Avenue
Ocean City, NJ 08226
1-877-237-4371 / 609-399-0076
info@bergerrealty.com



877 Moss Mill
Galloway Township, NJ 08205

Asking \$110,000.00



COMMENTS

Here's your opportunity to build your dream home in the wonderful Leeds Point area of Galloway township. Just minutes to Smithville Village and backs up the the wildlife refuge. This 3.53 acre lot is cleared in the front and then wooded in the middle and back, with wetlands on the very back end of the lot. But there is plenty of room to build your home. Natural gas is in the street. Wetlands delineation is on file. Ready to build. Seller has accepted a conditional contract but is continuing to take back-up offers.

PROPERTY DETAILS



Ask for Donald Edwards
Berger Realty Inc
3160 Asbury Avenue, Ocean City
Call: 609-399-0076
Email to: dwe@bergerrealty.com

