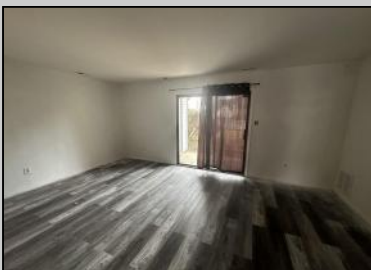




3302 Larkspur Ct # 46  
 Mays Landing, NJ 08330

Asking \$159,900.00



SJSRMLS

**COMMENTS**

\*\*\*\*\*BEST LOCATION IN THE WOODLANDS\*\*\*\*\* FIRST FLOOR W/ NICE FLOORPLAN-SHOW N GO EASY TO SHOW! CLOSE TO EVERYTHING INC TRANSPORATION, THE MALL, SHOPPING , DINING AND MAJOR HIGHWAYS! THIS 2 BEDROOM 1 BATH CONDO IS SUPER AFFORDABLE W/. LOW TAXES BRAND NEW WOOD FLOORING THROUGH OUT FRESHLY PAINTED AND EZ TO SHOW.

**PROPERTY DETAILS**

ParkingGarage None	Heating Electric	Cooling Central	HotWater Electric
Water Public Water	Sewer Public Sewer		



Ask for Dale Collins  
 Berger Realty Inc  
 3160 Asbury Avenue, Ocean City  
 Call: 609-399-0076  
 Email to: djc@bergerrealty.com  
 http://www.BADERCOLLINS.com

