

Berger Realty

Since 1928

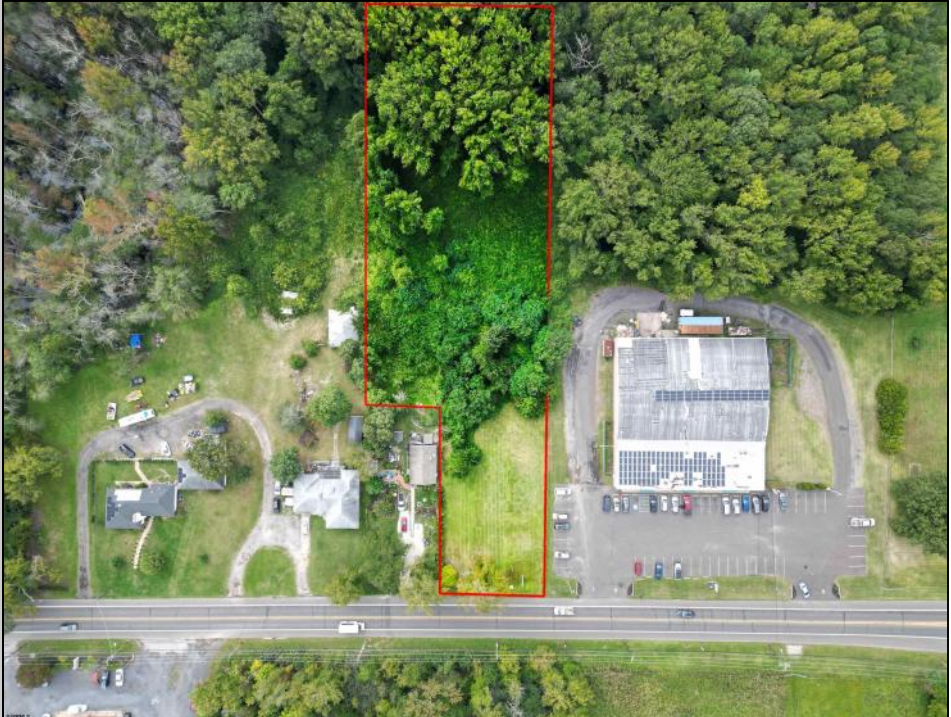
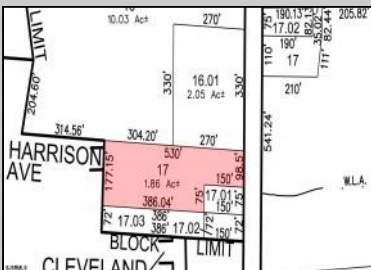
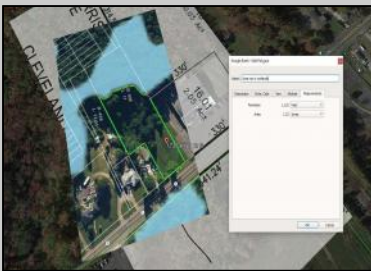


Berger Realty, Inc.
 3160 Asbury Avenue
 Ocean City, NJ 08226
 1-877-237-4371 / 609-399-0076
 info@bergerrealty.com



173 Delsea Dr S
 Glassboro, NJ 08028

Asking \$175,000.00



COMMENTS

Tremendous commercial development opportunity located less than 2 miles from Rowan University. Conveniently situated within Glassboro's C-4 (Commercial Redevelopment Zone) zoning district, and w/ public water, sewer, and natural gas hook-ups located in street; this parcel is prime for development. Located just a stone's throw from Rt55, 295, Atlantic City Expressway, etc. Priced to sell!

PROPERTY DETAILS



Ask for Tanya Pinkerton
 Berger Realty Inc
 3160 Asbury Avenue, Ocean City
 Call: 609-399-0076
 Email to: tp@bergerrealty.com

