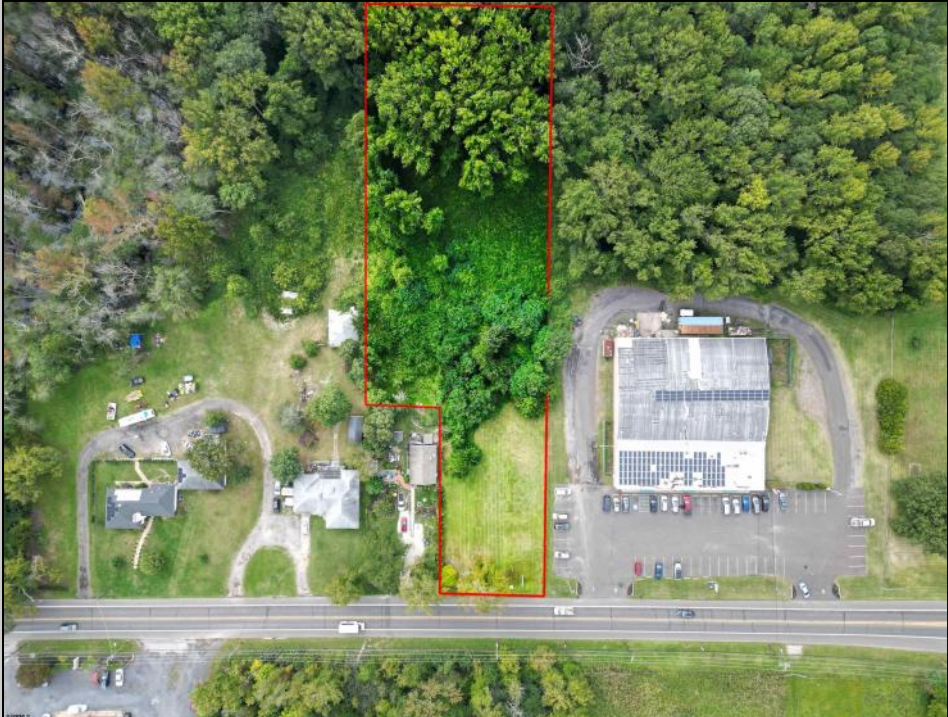
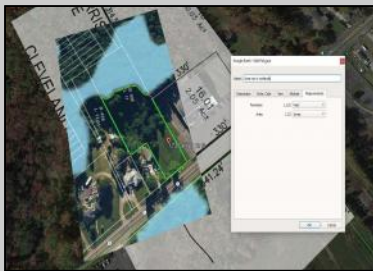




173 Delsea Dr S  
 Glassboro, NJ 08028

Asking \$175,000.00



**COMMENTS**

Tremendous commercial development opportunity located less than 2 miles from Rowan University. Conveniently situated within Glassboro's C-4 (Commercial Redevelopment Zone) zoning district, and w/ public water, sewer, and natural gas hook-ups located in street; this parcel is prime for development. Located just a stone's throw from Rt55, 295, Atlantic City Expressway, etc. Priced to sell!

**PROPERTY DETAILS**



Ask for Theresa Maina  
 Berger Realty Inc  
 3160 Asbury Avenue, Ocean City  
 Call: 609-399-0076  
 Email to: tam@bergerrealty.com

