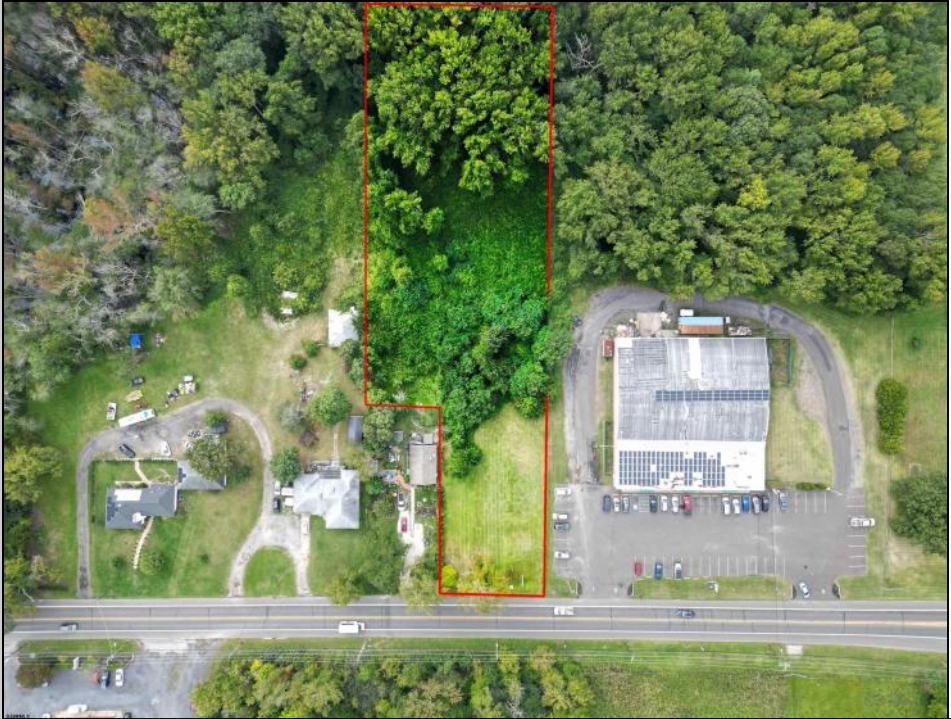
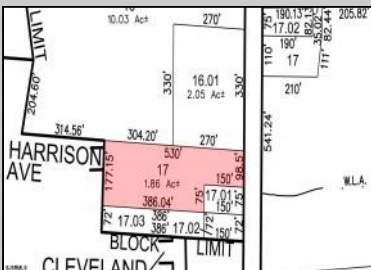
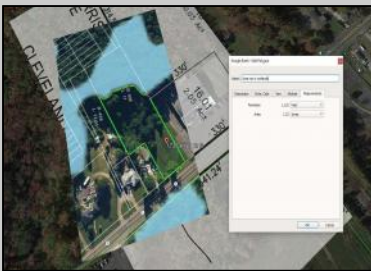




173 Delsea Dr S
 Glassboro, NJ 08028

Asking \$175,000.00



COMMENTS

Tremendous commercial development opportunity located less than 2 miles from Rowan University. Conveniently situated within Glassboro's C-4 (Commercial Redevelopment Zone) zoning district, and w/ public water, sewer, and natural gas hook-ups located in street; this parcel is prime for development. Located just a stone's throw from Rt55, 295, Atlantic City Expressway, etc. Priced to sell!

PROPERTY DETAILS



Ask for Michael Wallitsch
 Berger Realty Inc
 1330 Bay Avenue, Ocean City
 Call: 609-391-1330
 Email to: mow@bergerrealty.com

