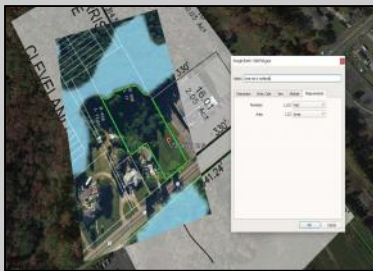




**173 Delsea Dr S
Glassboro, NJ 08028**

Asking \$175,000.00



COMMENTS

Tremendous commercial development opportunity located less than 2 miles from Rowan University. Conveniently situated within Glassboro's C-4 (Commercial Redevelopment Zone) zoning district, and w/ public water, sewer, and natural gas hook-ups located in street; this parcel is prime for development. Located just a stone's throw from Rt55, 295, Atlantic City Expressway, etc. Priced to sell!

PROPERTY DETAILS



Ask for Linda Watts
Berger Realty Inc
1670 Boardwalk, Ocean City
Call: 609-391-0500
Email to: ljw@bergerrealty.com

