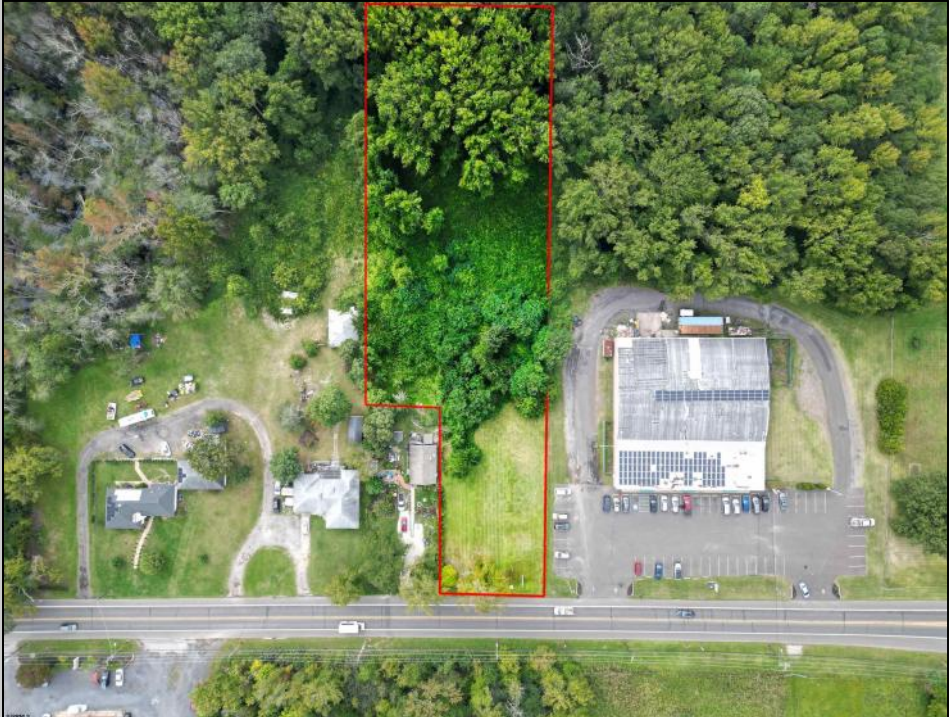
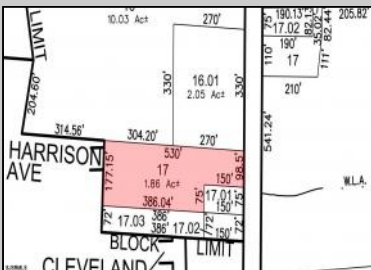
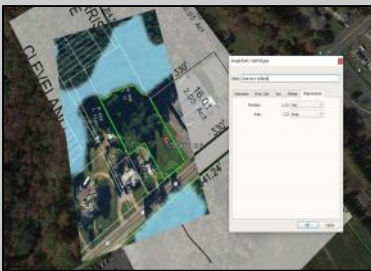




**173 Delsea Dr S  
Glassboro, NJ 08028**

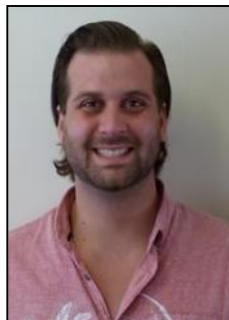
**Asking \$175,000.00**



**COMMENTS**

Tremendous commercial development opportunity located less than 2 miles from Rowan University. Conveniently situated within Glassboro's C-4 (Commercial Redevelopment Zone) zoning district, and w/ public water, sewer, and natural gas hook-ups located in street; this parcel is prime for development. Located just a stone's throw from Rt55, 295, Atlantic City Expressway, etc. Priced to sell!

**PROPERTY DETAILS**



Ask for Colin Halliday  
Berger Realty Inc  
1670 Boardwalk, Ocean City  
Call: 609-391-0500  
Email to: [ceh@bergerrealty.com](mailto:ceh@bergerrealty.com)

