

Berger Realty

Since 1928

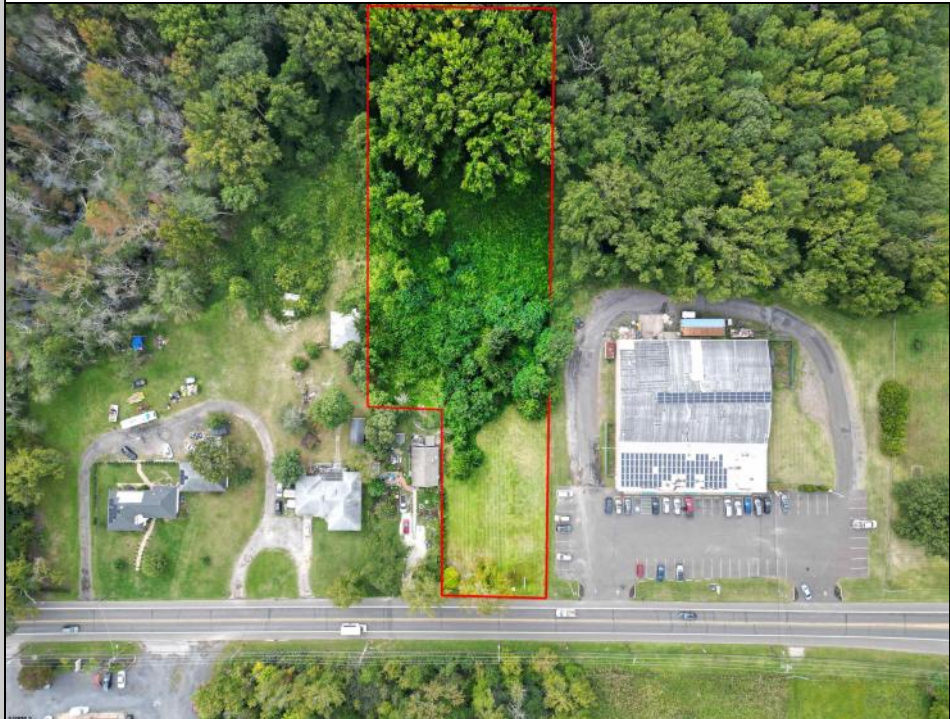
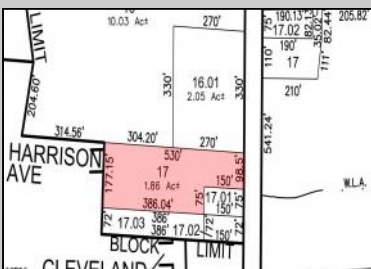
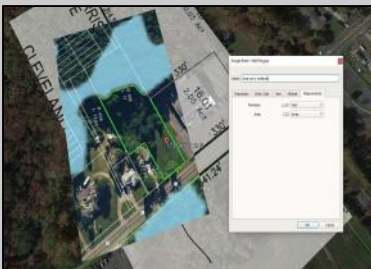


Berger Realty, Inc.
3160 Asbury Avenue
Ocean City, NJ 08226
1-877-237-4371 / 609-399-0076
info@bergerrealty.com



173 Delsea Dr S
Glassboro, NJ 08028

Asking \$175,000.00



COMMENTS

Tremendous commercial development opportunity located less than 2 miles from Rowan University. Conveniently situated within Glassboro's C-4 (Commercial Redevelopment Zone) zoning district, and w/ public water, sewer, and natural gas hook-ups located in street; this parcel is prime for development. Located just a stone's throw from Rt55, 295, Atlantic City Expressway, etc. Priced to sell!

PROPERTY DETAILS



Ask for Ben Duncan
Berger Realty Inc
3160 Asbury Avenue, Ocean City
Call: 609-399-0076
Email to: bmd@bergerrealty.com

