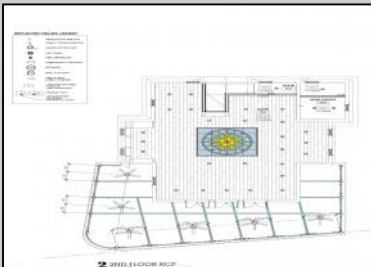
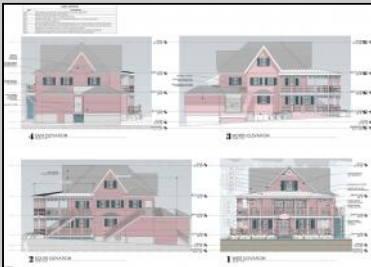




920 Shore Road
Somers Point, NJ 08244

Asking \$850,000.00



COMMENTS

Welcome to 920 Shore Road. This is no doubt a desirable location in the growing Somers Point market. The property sits just off the base of the Ocean City 9th Street Bridge and is surrounded by many popular Restaurants and Businesses. 920 Shore will be a tremendous addition to the area. Approved for a 3,100sf building and twenty three car parking lot. Plans on file consist of a first floor kitchen with space designated to retail and package goods for walk in traffic. Second floor is laid out for indoor dining with a grand covered deck adding additional seating. Stunning design will make this a landmark building and the views will keep patrons coming back for generations. The third floor offers a one bedroom loft apartment adding to the value of this site. Building is currently down to the studs, prepped ready for construction. All the planning is done. Call for marketing and floor plans.

PROPERTY DETAILS

| | | | |
|-----------------|-------------------|------------------------|--------------------|
| OutsideFeatures | ParkingGarage | InteriorFeatures | Basement |
| Loading Dock | 11 or More Spaces | Handicap Features | 6 Ft. or More Head |
| | Off Street | Living Space Available | Room |
| | Paved | | |
| Water | Sewer | | |
| Public | Public Sewer | | |



Ask for Ildar Baygeldin
Berger Realty Inc
109 E 55th St., Ocean City
Call: 609-399-4211
Email to: ieb@bergerrealty.com

