

Berger Realty

Since 1928

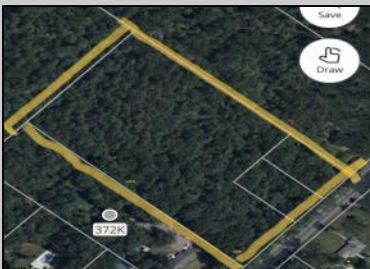


Berger Realty, Inc.
3160 Asbury Avenue
Ocean City, NJ 08226
1-877-237-4371 / 609-399-0076
info@bergerrealty.com



Route 50 (County Blvd)
Mays Landing, NJ 08330

Asking \$59,000.00



COMMENTS

Lot contains 5.66 acres with 400' of frontage in RD-5 zone. Building can be set 120' from road based on approvals. Great are to spread out and buil the home of your dreams.

PROPERTY DETAILS



Ask for Michael Moss
Berger Realty Inc
3160 Asbury Avenue, Ocean City
Call: 609-399-0076
Email to: mvm@bergerrealty.com

