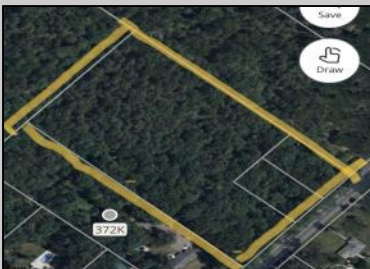




Route 50 (County Blvd)  
Mays Landing, NJ 08330

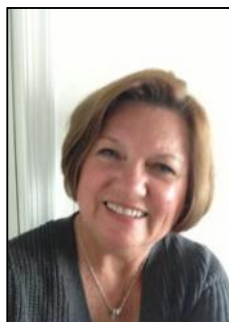
Asking \$59,000.00



### COMMENTS

Lot contains 5.66 acres with 400' of frontage in RD-5 zone. Building can be set 120' from road based on approvals. Great are to spread out and buil the home of your dreams.

### PROPERTY DETAILS



Ask for Linda Watts  
Berger Realty Inc  
1670 Boardwalk, Ocean City  
Call: 609-391-0500  
Email to: [ljw@bergerrealty.com](mailto:ljw@bergerrealty.com)

