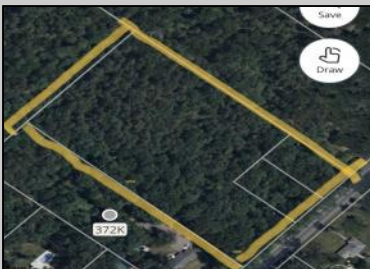




Route 50 (County Blvd)
Mays Landing, NJ 08330

Asking \$59,000.00



COMMENTS

Lot contains 5.66 acres with 400' of frontage in RD-5 zone. Building can be set 120' from road based on approvals. Great are to spread out and buil the home of your dreams.

PROPERTY DETAILS



Ask for Ildar Baygeldin
Berger Realty Inc
109 E 55th St., Ocean City
Call: 609-399-4211
Email to: ieb@bergerrealty.com

