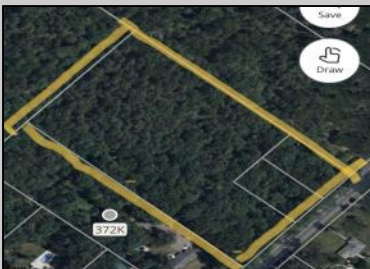




Route 50 (County Blvd)
Mays Landing, NJ 08330

Asking \$59,000.00



COMMENTS

Lot contains 5.66 acres with 400' of frontage in RD-5 zone. Building can be set 120' from road based on approvals. Great are to spread out and build the home of your dreams.

PROPERTY DETAILS



Ask for Colin Halliday
Berger Realty Inc
1670 Boardwalk, Ocean City
Call: 609-391-0500
Email to: ceh@bergerrealty.com

