

# Berger Realty

Since 1928



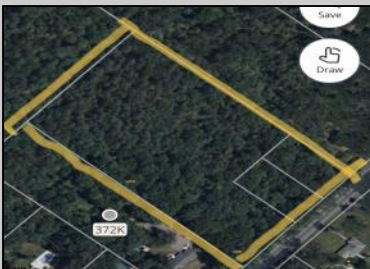
Berger Realty, Inc.  
55th & Haven Avenue  
Ocean City, NJ 08226  
609-399-0040

info@bergerrealty.com



Route 50 (County Blvd)  
Mays Landing, NJ 08330

Asking \$59,000.00



## COMMENTS

Lot contains 5.66 acres with 400' of frontage in RD-5 zone. Building can be set 120' from road based on approvals. Great are to spread out and build the home of your dreams.

## PROPERTY DETAILS



Ask for Brent Kolmer  
Berger Realty Inc  
109 E 55th St., Ocean City  
Call: 609-399-4211  
Email to: bak@bergerrealty.com

