

Berger Realty

Since 1928



Berger Realty, Inc.
3160 Asbury Avenue
Ocean City, NJ 08226
1-877-237-4371 / 609-399-0076
info@bergerrealty.com



2330 New Road
Northfield, NJ 08225

Asking \$595,000.00



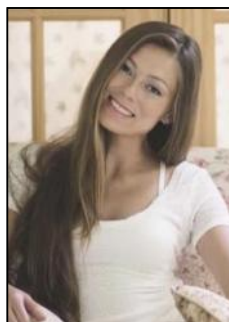
SJSRMLS

COMMENTS

PRIME 3600+ SQ FT OFFICE BUILDING WITH 1800+ SQ FT BASEMENT IN GREAT NORTHFIELD LOCATION. EACH 1800+ SQ FT FLOOR INCLUDES RECEPTION AREA, CONFERENCE ROOM AND 4 OFFICES. PROPERTY IS LEASED TO BANK ON FIRST LEVEL AND CASINO COMPANY ON SECOND LEVEL.

PROPERTY DETAILS

OutsideFeatures Sign	ParkingGarage 11 or More Spaces	Basement 6 Ft. or More Room Full	Heating Head Forced Air Gas-Natural
Cooling Central	HotWater Gas	Water Public	Sewer Public Sewer



Ask for Margarita Kobilianets
Berger Realty Inc
3160 Asbury Avenue, Ocean City
Call: 609-399-0076
Email to: mak@bergerrealty.com

