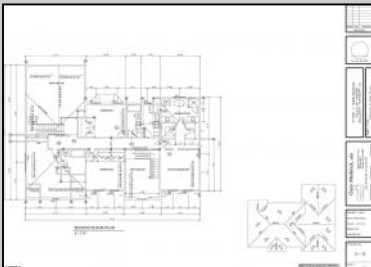
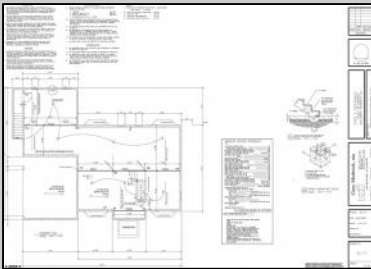
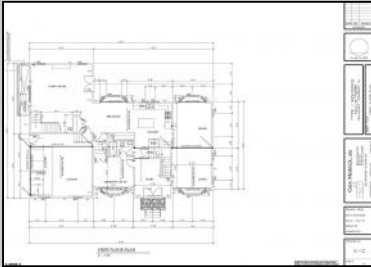




114,116/6215 Delaware Avenue/Mill Rd  
 Egg Harbor Township, NJ 08234

Asking \$669,999.00



S.JSRMLS

### COMMENTS

Discover Elegance and Modern Living in Egg Harbor Township's Premier Development! Excitement is in the air as construction is well underway for Egg Harbor Township's newest and most captivating development. Choose from two distinctive models, each offering 4+bedrooms for spacious and luxurious living. All homes feature vinyl flooring, a2-car garage, open floor plans, and ready-to-finish walkout basements with superior walls. Experience culinary excellence with stainless steel appliances and granite countertops throughout. Act swiftly to secure your place in this thriving community. This is your chance to be a part of a flourishing community where modernity meets comfort.

### PROPERTY DETAILS

Exterior	ParkingGarage	AppliancesIncluded	Heating
See Remarks	See Remarks	Dishwasher	Gas-Natural
		Dryer	
		Gas Stove	
		Microwave	
		Refrigerator	
		Washer	
Cooling	Water	Sewer	
Central	Public	Public Sewer	

<b>GROSS AREAS</b>		<b>TOM 2</b>
FIRST FLOOR LIVING AREA	1,779 SF	
SECOND FLOOR LIVING AREA	1,522 SF	
BASEMENT AREA	1,700 SF	
GARAGE AREA	460 SF	



Ask for Tanya Pinkerton  
 Berger Realty Inc  
 3160 Asbury Avenue, Ocean City  
 Call: 609-399-0076  
 Email to: tp@bergerrealty.com

