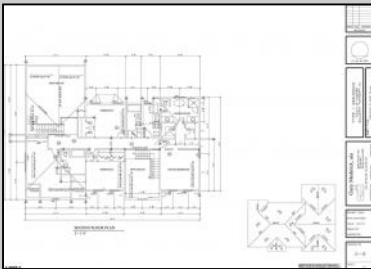
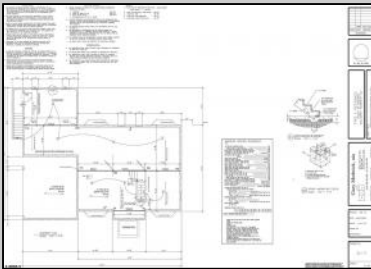




114,116/6215 Delaware Avenue/Mill Rd
 Egg Harbor Township, NJ 08234

Asking \$669,999.00



S.JSRMLS

COMMENTS

Discover Elegance and Modern Living in Egg Harbor Township's Premier Development! Excitement is in the air as construction is well underway for Egg Harbor Township's newest and most captivating development. Choose from two distinctive models, each offering 4+bedrooms for spacious and luxurious living. All homes feature vinyl flooring, a2-car garage, open floor plans, and ready-to-finish walkout basements with superior walls. Experience culinary excellence with stainless steel appliances and granite countertops throughout. Act swiftly to secure your place in this thriving community. This is your chance to be a part of a flourishing community where modernity meets comfort.

PROPERTY DETAILS

Exterior See Remarks	ParkingGarage See Remarks	AppliancesIncluded Dishwasher Dryer Gas Stove Microwave Refrigerator Washer	Heating Gas-Natural
Cooling Central	Water Public	Sewer Public Sewer	

GROSS AREAS TOM 2

FIRST FLOOR LIVING AREA	1,779 SF
SECOND FLOOR LIVING AREA	1,522 SF
BASEMENT AREA	1,700 SF
GARAGE AREA	460 SF



Ask for J.K. Hepner, III
 Berger Realty Inc
 3160 Asbury Avenue, Ocean City
 Call: 609-399-0076
 Email to: jkh@bergerrealty.com

