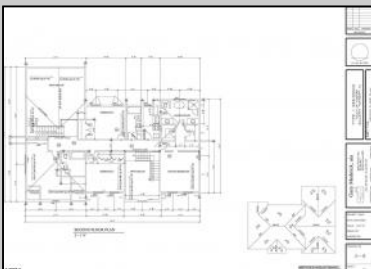
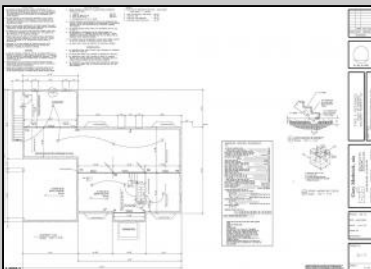
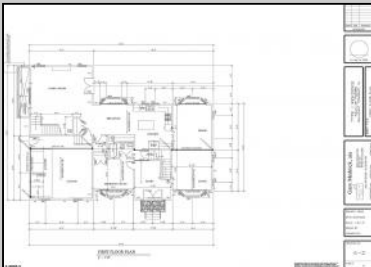




114,116/6215 Delaware Avenue/Mill Rd  
 Egg Harbor Township, NJ 08234

Asking \$669,999.00



S.JSRMLS

**COMMENTS**

Discover Elegance and Modern Living in Egg Harbor Township's Premier Development! Excitement is in the air as construction is well underway for Egg Harbor Township's newest and most captivating development. Choose from three distinctive models, each offering 4+ bedrooms for spacious and luxurious living. These executive homes come with the option to personalize and upgrade according to your preferences. Key Features: Modern Luxury: Immerse yourself in the epitome of contemporary living with superior design and quality construction. Model Variety: Select from three thoughtfully crafted models, each offering unique features and layouts. Upgrades Available: Tailor your dream home with optional upgrades to match your lifestyle and preferences. Inclusive Amenities: All homes feature vinyl flooring, a 2-car garage, open floor plans, and ready-to-finish walkout basements with superior walls. Gourmet Kitchens: Experience culinary excellence with stainless steel appliances and granite countertops throughout. Limited Availability: Act swiftly as four homes are already under contract, leaving just seven opportunities to secure your place in this thriving community. Secure Your Dream Home: This is your chance to be a part of a flourishing community where modernity meets comfort. Don't miss out on the opportunity to own one of these executive homes. Currently, only seven homes are left, and with four already under contract, time is of the essence. Act Now and Embrace Elevated Living! Contact us today to schedule a private tour or inquire about the customization options available. Your dream home awaits in Egg Harbor Township's most exciting new development! Don't miss the chance to elevate your lifestyle – seize this opportunity now! SEE PHOTOS FOR SPECIFIC DETAILS.

GROSS AREAS	TOM 2
FIRST FLOOR LIVING AREA	1,779 SF
SECOND FLOOR LIVING AREA	1,522 SF
BASEMENT AREA	1,700 SF
GARAGE AREA	460 SF



Central

Ask for Graham Ginn  
 Parking Garage  
 Berger Realty Inc.  
 See Remarks  
 3160 Asbury Avenue, Ocean City  
 Call: 609-399-0076  
 Email to: gmg@bergerrealty.com  
 https://www.ocnj.com

Water Public  
 Sewer Public Sewer

- PROPERTY DETAILS**
- Appliances Included
  - Dishwasher
  - Gas Stove
  - Refrigerator
  - Washer
  - Heating Gas Natural

