

Berger Realty

Since 1928



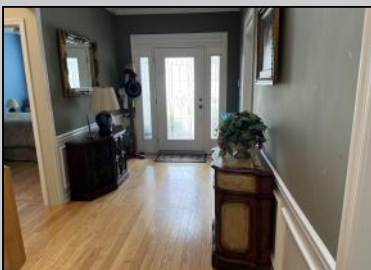
Ocean 17
1670 Boardwalk
Ocean City, NJ 08226
609-391-0500

✉ oc17@BergerRealty.com



1731 S. Shore Road
Seaville, NJ 08230

Asking \$489,000.00



COMMENTS

Welcome to Osprey Point, an active 55 + adult, premier year round residential community in UPPER TWP., Cape May County, close to beaches, shopping , dining ,etc. This spacious and absolute move-in ready, 2000 sq. ft. home features the ground floor level with 2 large bedrooms with plenty of closet space and 2 full baths. The attached 1 car garage has an inside entry thru the laundry room. In the rear of the home is a bright Sun Room which opens to your private patio with retractable awning and scenic views and lush manicured front yard. The upper 2nd floor stairway is equipped with a chair-lift leading to a HUGE bonus loft suitable as a guest room, den, office area, etc. and large walk-in attic storage room. Other Features include custom hardwood floors throughout the main living space, built-in gas log fireplace, wainscoting, crown molding, security system, intercom. The unit is designed in the open concept mode where you will love the NEW GOURMET KITCHEN and pantry with granite countertop, upscale cabinetry, stainless steel appliance package and tile floor overlooking the ample size dining room and other areas. The newly remodeled main bath features a tiled Walk-IN shower, and newer heating and air-conditioning system for year round comfort. Also includes access to nearby Club House, pool, tennis and pickle ball courts, library and gym. Pets are permitted with some restrictions. (House cat present). Come join your neighbors and enjoy easy living at Osprey Point and all that it offers. Quick settlement possible . To see it is to love it. Don't delay - It will not last.

PROPERTY DETAILS

Exterior



Sewer
Private

ParkingGarage

Attached Garage

Auto Door Opener

One Car

OtherRooms

Dining Room

Full Kitchen

Florida Room

Laundry/Utility Room

Primary BR on 1st floor

Storage Attic

InteriorFeatures

Fireplace(s)

Hardwood Floors

Master Bath

Stainless Steel Appliance

Walk-In Shower

Wainscoting

Year Round Comfort

Access to Club House

Access to Pool

Access to Tennis

Access to Pickle Ball

Access to Gym

Access to Library

Access to Beach

Access to Shopping

Access to Dining

Access to Entertainment

Cooling

Ceiling Fan(s)

Central

HotWater

Gas

Stainless Steel Appliance

Walk-In Shower

Wainscoting

Year Round Comfort

Access to Club House

Access to Pool

Access to Tennis

Access to Pickle Ball

Access to Gym

Access to Library

Access to Beach

Access to Shopping

Access to Dining

Access to Entertainment

Stainless Steel Appliance

Walk-In Shower

Wainscoting

Year Round Comfort

Access to Club House

Access to Pool

Access to Tennis

Access to Pickle Ball

Access to Gym

Access to Library

Access to Beach

Access to Shopping

Access to Dining

Access to Entertainment

Stainless Steel Appliance

Walk-In Shower

Wainscoting

Year Round Comfort

Access to Club House

Access to Pool

Access to Tennis

Access to Pickle Ball

Access to Gym

Access to Library

Access to Beach

Access to Shopping

Access to Dining

Access to Entertainment