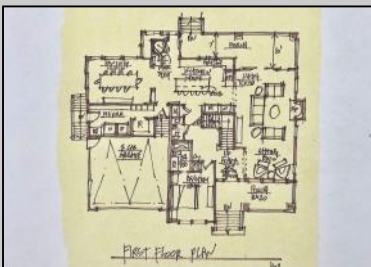




903 Maple Ave  
 Linwood, NJ 08221

Asking \$1,199,000.00



**COMMENTS**

BRAND NEW CUSTOM CONSTRUCTED 3,400 SQ.FT FAMILY 2-story in Heart of Linwood. Centrally located on bike path w/oversized lot suitable for pool & much more. Only steps to Ballpark and straight shot to all 3 Linwood Award winning public schools. 5 bdrm, 4.5 bath, 9 ft. basement, 2-car garage and an elegant flowing floorplan make this among finest new construction ever offered in Linwood. Includes 3 private ensuite bedrooms (ONE ON FIRST FLOOR!). Large rear covered porch flowing from multiple room access, and balcony off MBR Suite Both enjoy cheerful SouthWest exposure!! Design, finishes, amenities and quality of materials and construction make this a value difficult to duplicate...and a location that suits its historically refined architecture!

**PROPERTY DETAILS**

|                |   |  |   |
|----------------|---|--|---|
| Exterior Vinyl | Outside Features<br>Curbs<br>Deck<br>Porch<br>Sidewalks<br>Sprinkler System | Parking Garage<br>Attached Garage<br>Two Car | Other Rooms<br>Breakfast Nook<br>Dining Room<br>Eat In Kitchen<br>Great Room<br>In-Law Quarters<br>Laundry/Utility Room<br>Pantry<br>Primary BR on 1st floor<br>Storage Attic |
|----------------|---|--|---|



Multi-Zoned

Ask for Dave Zelinski  
 Berger Realty Inc  
 1330 Bay Avenue, Ocean City  
 Call: 609-391-1330  
 Email: djz@bergerrealty.com  
 Appliances Included  
 Dishwasher  
 Disposal  
 Gas stove  
 Refrigerator  
 Basement  
 Partial Unfinished



Heating  
 Public Sewer