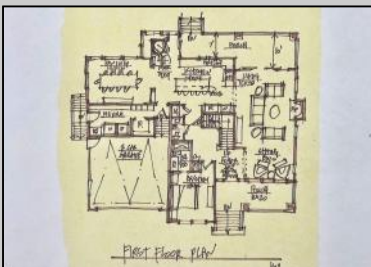




903 Maple Ave  
Linwood, NJ 08221

Asking \$1,199,000.00



**COMMENTS**

BRAND NEW CUSTOM CONSTRUCTED 3,400 SQ.FT FAMILY 2-story in Heart of Linwood. Centrally located on bike path w/oversized lot suitable for pool & much more. Only steps to Ballpark and straight shot to all 3 Linwood Award winning public schools. 5 bdrm, 4.5 bath, 9 ft. basement, 2-car garage and an elegant flowing floorplan make this among finest new construction ever offered in Linwood. Includes 3 private ensuite bedrooms (ONE ON FIRST FLOOR!). Large rear covered porch flowing from multiple room access, and balcony off MBR Suite Both enjoy cheerful SouthWest exposure!! Design, finishes, amenities and quality of materials and construction make this a value difficult to duplicate...and a location that suits its historically refined architecture!

**PROPERTY DETAILS**

Exterior Vinyl	Outside Features Curbs Deck Porch Sidewalks Sprinkler System	Parking Garage Attached Garage Two Car	Other Rooms Breakfast Nook Dining Room Eat In Kitchen Great Room In-Law Quarters Laundry/Utility Room Pantry Primary BR on 1st floor Storage Attic
----------------	--	--	--

**SALE**

**BADER-COLLINS ASSOCIATES**  
"THE TEAM YOU CAN TRUST"

**BADERCOLLINS.COM**  
Multi-Zoned

Ask for Bader - Collins Associates  
Berger Realty Inc.  
3160 Asbury Avenue Ocean City  
Call 609-399-0076  
Email: bca@bergerrealty.com  
http://www.BADERCOLLINS.com

Hot Water Gas  
Basement Partial Unfinished  
Refrigerator  
Water Public  
Public Sewer

