

Berger Realty

Since 1928



Berger Realty, Inc.
3160 Asbury Avenue
Ocean City, NJ 08226
1-877-237-4371 / 609-399-0076
✉ info@bergerrealty.com



7340 Venice
Mays Landing, NJ 08330

Asking \$40,000.00

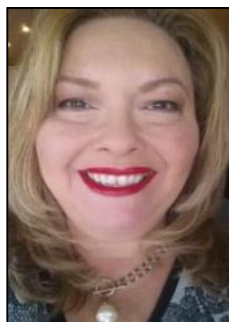
PHOTO NOT AVAILABLE



COMMENTS

Vacant land 4.67 acres on a paper street second lot from the corner of Elm and Venice Blvd. Pinelands application has NOT been submitted.

PROPERTY DETAILS



Ask for Theresa Maina
Berger Realty Inc
3160 Asbury Avenue, Ocean City
Call: 609-399-0076
Email to: tam@bergerrealty.com

